

# SLIMLINE CATALOGUE

# 2021

First Class  
Professional Quality



**itc** industrialtooling  
corporation ltd



**K KEMMLER**®  
Präzisionswerkzeuge



**KEMMLER Präzisionswerkzeuge** is your professional partner and supplier for high precision Spindle Toolholders. Our Toolholders are designed to work with the latest generation of CNC Machine Tools.

**KEMMLER** have built a reputation for quality and precision gained in both, national and international markets.

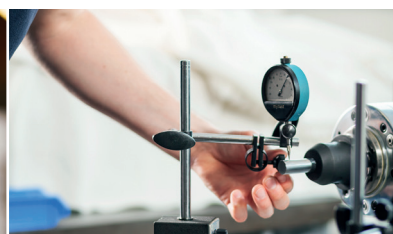
**KEMMLER** stands for high precision, reliability, as well as quality. Our products are used widely in important industries, Aerospace, Medical, High Precision and Automotive to name a few.



#### **100% CERTIFICATED KEMMLER® QUALITY**

*High Precision , No Compromise.  
Kemmler manufactures Precision Tools for  
ideal machining processes.*

- All holders are made of forged steel
- Specific, low distortion hardened
- Surface hardened HRC 60 ± 2
- Hardening depth 0,8 mm ± 0,2 mm
- Black finish and precision ground
- Taper angle tolerance < AT 3 according to DIN 7187 and DIN 2080
- Max. runout less than 0,003 mm
- Surface roughness Rz less than 0,5 μ
- Tensile strength in the core of min. 800 N/mm<sup>2</sup>
- Dynamically balanced by default G 6,3 / 15.000 U/min



**Toolholders SK 40 DIN 69871 + SK 30 collet chucks**


6 - 8

**Toolholders JIS B 6339 (MAS 403 BT)**


9 - 11

**Toolholders DIN 69893 / ISO 12164-1 (HSK-A63)**


12 - 14

**Toolholders DIN 69893 / ISO 12164 (HSK-F)**


15

**Toolholders with polygonal shank ISO 26623**


16 - 17

**Collets**


18 - 23

**Pull studs**


24

**Accessories**


25

**Quick change adaptors for tapping chucks  
Tapping chucks for synchronisation**


26

**Metrology**


27

**Precision vices**


28 - 29



## Toolholders DIN 69871



Collet chucks for collets DIN 6499 (ISO 15488) ER-system

DIN 69871 AD  $\leq 0,003$   $15.000 \text{ min}^{-1}$

| Order no.   | Size                       | GBP    |
|-------------|----------------------------|--------|
| 402.02.10   | SK 40 - 1 / 10 - 63 ER 16  | 49,00  |
| 402.02.13   | SK 40 - 2 / 13 - 70 ER 20  | 49,00  |
| 402.02.16   | SK 40 - 2 / 16 - 60 ER 25  | 49,00  |
| 402.02.20   | SK 40 - 2 / 20 - 70 ER 32  | 51,00  |
| 402.02.26   | SK 40 - 3 / 26 - 80 ER 40  | 54,00  |
| 402.02.10.1 | SK 40 - 1 / 10 - 100 ER 16 | 55,00  |
| 402.02.13.1 | SK 40 - 2 / 13 - 100 ER 20 | 61,00  |
| 402.02.16.1 | SK 40 - 2 / 16 - 100 ER 25 | 61,00  |
| 402.02.20.1 | SK 40 - 2 / 20 - 100 ER 32 | 61,00  |
| 402.02.26.1 | SK 40 - 3 / 26 - 100 ER 40 | 70,00  |
| 403.02.10.2 | SK 40 - 1 / 10 - 160 ER 16 | 95,00  |
| 403.02.13.2 | SK 40 - 2 / 13 - 160 ER 20 | 95,00  |
| 403.02.16.2 | SK 40 - 2 / 16 - 160 ER 25 | 95,00  |
| 403.02.20.2 | SK 40 - 2 / 20 - 160 ER 32 | 97,00  |
| 403.02.26.2 | SK 40 - 3 / 26 - 160 ER 40 | 102,00 |



End mill holders DIN 6359 for end mills DIN 1835-B

DIN 69871 AD  $\leq 0,003$   $15.000 \text{ min}^{-1}$

| Order no.   | Size             | GBP   |
|-------------|------------------|-------|
| 402.04.06   | SK 40 - 06 - 50  | 36,00 |
| 402.04.08   | SK 40 - 08 - 50  | 34,00 |
| 402.04.10   | SK 40 - 10 - 50  | 34,00 |
| 402.04.12   | SK 40 - 12 - 50  | 34,00 |
| 402.04.14   | SK 40 - 14 - 50  | 34,00 |
| 402.04.16   | SK 40 - 16 - 63  | 34,00 |
| 402.04.18   | SK 40 - 18 - 63  | 34,00 |
| 402.04.20   | SK 40 - 20 - 63  | 34,00 |
| 402.04.25   | SK 40 - 25 - 100 | 39,00 |
| 402.04.32   | SK 40 - 32 - 100 | 41,00 |
| 402.04.06.1 | SK 40 - 06 - 100 | 48,00 |
| 402.04.08.1 | SK 40 - 08 - 100 | 45,00 |
| 402.04.10.1 | SK 40 - 10 - 100 | 45,00 |
| 402.04.12.1 | SK 40 - 12 - 100 | 45,00 |
| 402.04.14.1 | SK 40 - 14 - 100 | 45,00 |
| 402.04.16.1 | SK 40 - 16 - 100 | 45,00 |
| 402.04.18.1 | SK 40 - 18 - 100 | 45,00 |
| 402.04.20.1 | SK 40 - 20 - 100 | 45,00 |



Collet chucks for collets DIN 6499 (ISO 15488) ER-system

DIN 69871 AD/B  $\leq 0,003$   $15.000 \text{ min}^{-1}$

| Order no.      | Size                       | GBP    |
|----------------|----------------------------|--------|
| 403.02.07      | SK 40 - 1 / 7 - 55 ER 11   | 92,00  |
| 403.02.07.1    | SK 40 - 1 / 7 - 100 ER 11  | 110,00 |
| 403.02.07.2    | SK 40 - 1 / 7 - 160 ER 11  | 126,00 |
| 403.02.07.10   | SK 40 - 1 / 10 - 55 ER 16  | 92,00  |
| 403.02.07.10.1 | SK 40 - 1 / 10 - 100 ER 16 | 110,00 |
| 403.02.07.10.2 | SK 40 - 1 / 10 - 160 ER 16 | 126,00 |

With mini nut



Milling arbors for screw-in cutters

DIN 69871 AD/B  $\leq 0,003$   $15.000 \text{ min}^{-1}$

| Order no.   | Size              | GBP    |
|-------------|-------------------|--------|
| 403.06.06   | SK 40 - M6 - 44   | 93,00  |
| 403.06.06.1 | SK 40 - M6 - 69   | 105,00 |
| 403.06.06.2 | SK 40 - M6 - 94   | 116,00 |
| 403.06.08   | SK 40 - M8 - 44   | 93,00  |
| 403.06.08.1 | SK 40 - M8 - 69   | 105,00 |
| 403.06.08.2 | SK 40 - M8 - 94   | 116,00 |
| 403.06.08.3 | SK 40 - M8 - 119  | 130,00 |
| 403.06.10.0 | SK 40 - M10 - 24  | 88,00  |
| 403.06.10   | SK 40 - M10 - 44  | 93,00  |
| 403.06.10.1 | SK 40 - M10 - 69  | 100,00 |
| 403.06.10.2 | SK 40 - M10 - 94  | 116,00 |
| 403.06.10.3 | SK 40 - M10 - 119 | 133,00 |
| 403.06.10.5 | SK 40 - M10 - 169 | 160,00 |
| 403.06.12.0 | SK 40 - M12 - 24  | 88,00  |
| 403.06.12   | SK 40 - M12 - 44  | 93,00  |
| 403.06.12.1 | SK 40 - M12 - 69  | 100,00 |
| 403.06.12.2 | SK 40 - M12 - 94  | 116,00 |
| 403.06.12.3 | SK 40 - M12 - 119 | 133,00 |
| 403.06.12.5 | SK 40 - M12 - 169 | 160,00 |
| 403.06.16.0 | SK 40 - M16 - 24  | 89,00  |
| 403.06.16   | SK 40 - M16 - 44  | 93,00  |
| 403.06.16.1 | SK 40 - M16 - 69  | 105,00 |
| 403.06.16.2 | SK 40 - M16 - 94  | 116,00 |
| 403.06.16.3 | SK 40 - M16 - 119 | 133,00 |
| 403.06.16.5 | SK 40 - M16 - 169 | 160,00 |



Collet chucks for collets KPS-system

DIN 69871 AD  $\leq 0,003$  G2,5 30.000 min<sup>-1</sup>

| Order no.   | Size                        | GBP    |
|-------------|-----------------------------|--------|
| 402.03.10   | SK 40 - 1 / 10 - 60 KPS 10  | 120,00 |
| 402.03.16   | SK 40 - 4 / 16 - 60 KPS 16  | 122,00 |
| 402.03.10.1 | SK 40 - 1 / 10 - 90 KPS 10  | 129,00 |
| 402.03.16.1 | SK 40 - 4 / 16 - 90 KPS 16  | 131,00 |
| 402.03.10.2 | SK 40 - 1 / 10 - 120 KPS 10 | 138,00 |
| 402.03.16.2 | SK 40 - 4 / 16 - 120 KPS 16 | 140,00 |



Shell mill holders DIN 6357 with enlarged contact face and coolant exit bores on the end face

DIN 69871 AD  $\leq 0,005$  G6,3 15.000 min<sup>-1</sup>

| Order no.   | Size             | GBP    |
|-------------|------------------|--------|
| 402.11.16   | SK 40 - 16 - 35  | 39,30  |
| 402.11.22   | SK 40 - 22 - 35  | 39,30  |
| 402.11.27   | SK 40 - 27 - 40  | 40,00  |
| 402.11.32   | SK 40 - 32 - 50  | 42,40  |
| 402.11.40   | SK 40 - 40 - 50  | 52,40  |
| 403.11.16.1 | SK 40 - 16 - 100 | 65,00  |
| 403.11.22.1 | SK 40 - 22 - 100 | 65,00  |
| 403.11.27.1 | SK 40 - 27 - 100 | 66,00  |
| 403.11.32.1 | SK 40 - 32 - 100 | 71,00  |
| 403.11.40.1 | SK 40 - 40 - 100 | 83,00  |
| 403.11.16.2 | SK 40 - 16 - 160 | 103,00 |
| 403.11.22.2 | SK 40 - 22 - 160 | 104,00 |
| 403.11.27.2 | SK 40 - 27 - 160 | 107,00 |
| 403.11.32.2 | SK 40 - 32 - 160 | 113,00 |
| 403.11.40.2 | SK 40 - 40 - 160 | 125,00 |



Quick change tapping chucks with length compensation on compression and expansion

DIN 69871 Form A

| Order no. | Size                   | GBP    |
|-----------|------------------------|--------|
| 402.16.12 | SK 40 - M3 / M14 Gr. 1 | 188,00 |
| 402.16.20 | SK 40 - M5 / M22 Gr. 2 | 201,00 |



Collet chucks for collets DIN 6499 (ISO 15488) ER-system without drive slots

DIN 69871 AD  $\leq 0,003$  G2,5 20.000 min<sup>-1</sup>

| Order no.   | Size                      | GBP    |
|-------------|---------------------------|--------|
| 302.62.16   | SK 30 - 2 / 16 - 50 ER 25 | 76,00  |
| 302.62.20   | SK 30 - 2 / 20 - 50 ER 32 | 79,00  |
| 302.62.20.1 | SK 30 - 2 / 20 - 57 ER 32 | 88,00  |
| 302.62.20.2 | SK 30 - 2 / 20 - 63 ER 32 | 92,00  |
| 302.62.26   | SK 30 - 3 / 26 - 60 ER 40 | 109,00 |



Adaptor sleeves for MT with tang DIN 6383

DIN 69871 AD  $\leq 0,005$  G6,3 15.000 min<sup>-1</sup>

| Order no. | Size           | GBP   |
|-----------|----------------|-------|
| 402.07.01 | SK 40 - 1 - 50 | 36,00 |
| 402.07.02 | SK 40 - 2 - 50 | 36,00 |
| 402.07.03 | SK 40 - 3 - 70 | 36,00 |
| 402.07.04 | SK 40 - 4 - 95 | 39,00 |



CNC-Drill chucks for clockwise and counter clockwise rotation

DIN 69871 AD  $\leq 0,030$  G6,3 15.000 min<sup>-1</sup>

| Order no. | Size                  | GBP    |
|-----------|-----------------------|--------|
| 402.15.08 | SK 40 - 0,5/ 8 - 70   | 199,00 |
| 402.15.13 | SK 40 - 1,0/ 13 - 90  | 190,00 |
| 402.15.16 | SK 40 - 2,5 / 16 - 95 | 195,00 |

Delivery incl. wrench



Tapping chucks for synchronisation for collets DIN 6499 (ISO 15488) ER-system

DIN 69871 AD/B  $\leq 0,003$  G6,3 15.000 min<sup>-1</sup>

| Order no.       | Size               | GBP    |
|-----------------|--------------------|--------|
| 403.16.02.10    | SK 40 - ER16 - 79  | 278,00 |
| 403.16.02.10.M* | SK 40 - ER16 - 79  | 278,00 |
| 403.16.02.13    | SK 40 - ER20 - 80  | 285,00 |
| 403.16.02.16    | SK 40 - ER25 - 84  | 285,00 |
| 403.16.02.20    | SK 40 - ER32 - 95  | 285,00 |
| 403.16.02.26    | SK 40 - ER40 - 120 | 303,00 |

\*With mini nut



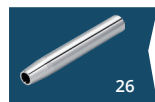
## Toolholders DIN 69871 Shrink chucks



Shrink chucks 4,5°

DIN 69871 AD/B  $\leq 0,003$   $25.000 \text{ min}^{-1}$

| Order no.   | Size             | GBP    |
|-------------|------------------|--------|
| 403.70.03   | SK 40 - 03 - 80  | 113,00 |
| 403.70.04   | SK 40 - 04 - 80  | 113,00 |
| 403.70.05   | SK 40 - 05 - 80  | 113,00 |
| 403.70.06   | SK 40 - 06 - 80  | 95,00  |
| 403.70.08   | SK 40 - 08 - 80  | 95,00  |
| 403.70.10   | SK 40 - 10 - 80  | 95,00  |
| 403.70.12   | SK 40 - 12 - 80  | 95,00  |
| 403.70.14   | SK 40 - 14 - 80  | 95,00  |
| 403.70.16   | SK 40 - 16 - 80  | 95,00  |
| 403.70.18   | SK 40 - 18 - 80  | 95,00  |
| 403.70.20   | SK 40 - 20 - 80  | 95,00  |
| 403.70.25   | SK 40 - 25 - 100 | 95,00  |
| 403.70.32   | SK 40 - 32 - 100 | 95,00  |
|             |                  |        |
| 403.70.03.1 | SK 40 - 03 - 120 | 129,00 |
| 403.70.04.1 | SK 40 - 04 - 120 | 129,00 |
| 403.70.05.1 | SK 40 - 05 - 120 | 129,00 |
| 403.70.06.1 | SK 40 - 06 - 120 | 113,00 |
| 403.70.08.1 | SK 40 - 08 - 120 | 113,00 |
| 403.70.10.1 | SK 40 - 10 - 120 | 113,00 |
| 403.70.12.1 | SK 40 - 12 - 120 | 113,00 |
| 403.70.14.1 | SK 40 - 14 - 120 | 113,00 |
| 403.70.16.1 | SK 40 - 16 - 120 | 113,00 |
| 403.70.18.1 | SK 40 - 18 - 120 | 113,00 |
| 403.70.20.1 | SK 40 - 20 - 120 | 113,00 |
|             |                  |        |
| 403.70.03.2 | SK 40 - 03 - 160 | 188,00 |
| 403.70.04.2 | SK 40 - 04 - 160 | 188,00 |
| 403.70.05.2 | SK 40 - 05 - 160 | 188,00 |
| 403.70.06.2 | SK 40 - 06 - 160 | 173,00 |
| 403.70.08.2 | SK 40 - 08 - 160 | 173,00 |
| 403.70.10.2 | SK 40 - 10 - 160 | 173,00 |
| 403.70.12.2 | SK 40 - 12 - 160 | 173,00 |
| 403.70.14.2 | SK 40 - 14 - 160 | 173,00 |
| 403.70.16.2 | SK 40 - 16 - 160 | 173,00 |
| 403.70.18.2 | SK 40 - 18 - 160 | 173,00 |
| 403.70.20.2 | SK 40 - 20 - 160 | 173,00 |
| 403.70.25.2 | SK 40 - 25 - 160 | 177,00 |
| 403.70.32.2 | SK 40 - 32 - 160 | 177,00 |



26



Shrink chucks 4,5° with cooling channels

DIN 69871 AD/B  $\leq 0,003$   $25.000 \text{ min}^{-1}$

| Order no.     | Size             | GBP    |
|---------------|------------------|--------|
| 403.70.06.K   | SK 40 - 06 - 80  | 122,00 |
| 403.70.08.K   | SK 40 - 08 - 80  | 122,00 |
| 403.70.10.K   | SK 40 - 10 - 80  | 122,00 |
| 403.70.12.K   | SK 40 - 12 - 80  | 122,00 |
| 403.70.14.K   | SK 40 - 14 - 80  | 122,00 |
| 403.70.16.K   | SK 40 - 16 - 80  | 122,00 |
| 403.70.18.K   | SK 40 - 18 - 80  | 122,00 |
| 403.70.20.K   | SK 40 - 20 - 80  | 122,00 |
|               |                  |        |
| 403.70.06.1.K | SK 40 - 06 - 120 | 148,00 |
| 403.70.08.1.K | SK 40 - 08 - 120 | 148,00 |
| 403.70.10.1.K | SK 40 - 10 - 120 | 148,00 |
| 403.70.12.1.K | SK 40 - 12 - 120 | 148,00 |
| 403.70.14.1.K | SK 40 - 14 - 120 | 148,00 |
| 403.70.16.1.K | SK 40 - 16 - 120 | 148,00 |
| 403.70.18.1.K | SK 40 - 18 - 120 | 148,00 |
| 403.70.20.1.K | SK 40 - 20 - 120 | 148,00 |



Shrink chucks 3° - slim

DIN 69871 AD/B  $\leq 0,003$   $25.000 \text{ min}^{-1}$

| Order no.   | Size             | GBP    |
|-------------|------------------|--------|
| 403.72.03   | SK 40 - 03 - 80  | 122,00 |
| 403.72.04   | SK 40 - 04 - 80  | 122,00 |
| 403.72.05   | SK 40 - 05 - 80  | 122,00 |
| 403.72.06   | SK 40 - 06 - 80  | 103,00 |
| 403.72.08   | SK 40 - 08 - 80  | 103,00 |
| 403.72.10   | SK 40 - 10 - 80  | 103,00 |
| 403.72.12   | SK 40 - 12 - 80  | 103,00 |
|             |                  |        |
| 403.72.03.1 | SK 40 - 03 - 120 | 151,00 |
| 403.72.04.1 | SK 40 - 04 - 120 | 151,00 |
| 403.72.05.1 | SK 40 - 05 - 120 | 151,00 |
| 403.72.06.1 | SK 40 - 06 - 120 | 128,00 |
| 403.72.08.1 | SK 40 - 08 - 120 | 128,00 |
| 403.72.10.1 | SK 40 - 10 - 120 | 128,00 |
| 403.72.12.1 | SK 40 - 12 - 120 | 128,00 |
|             |                  |        |
| 403.72.06.2 | SK 40 - 06 - 160 | 187,00 |
| 403.72.08.2 | SK 40 - 08 - 160 | 187,00 |
| 403.72.10.2 | SK 40 - 10 - 160 | 187,00 |
| 403.72.12.2 | SK 40 - 12 - 160 | 187,00 |



Collet chucks for collets DIN 6499 (ISO 15488) ER-system

JIS B 6339 AD  $\uparrow \leq 0,003$  G6,3 15.000 min<sup>-1</sup>

| Order no.   | Size                       | GBP    |
|-------------|----------------------------|--------|
| 405.02.10   | BT 40 - 1 / 10 - 63 ER 16  | 52,00  |
| 405.02.13   | BT 40 - 2 / 13 - 70 ER 20  | 52,00  |
| 405.02.16   | BT 40 - 2 / 16 - 60 ER 25  | 52,00  |
| 405.02.20   | BT 40 - 2 / 20 - 70 ER 32  | 54,00  |
| 405.02.26   | BT 40 - 3 / 26 - 80 ER 40  | 57,00  |
| 405.02.10.1 | BT 40 - 1 / 10 - 100 ER 16 | 58,00  |
| 405.02.13.1 | BT 40 - 2 / 13 - 100 ER 20 | 65,00  |
| 405.02.16.1 | BT 40 - 2 / 16 - 100 ER 25 | 65,00  |
| 405.02.20.1 | BT 40 - 2 / 20 - 100 ER 32 | 65,00  |
| 405.02.26.1 | BT 40 - 3 / 26 - 100 ER 40 | 74,00  |
| 406.02.10.2 | BT 40 - 1 / 10 - 100 ER 16 | 100,00 |
| 406.02.13.2 | BT 40 - 2 / 13 - 160 ER 20 | 100,00 |
| 406.02.16.2 | BT 40 - 2 / 16 - 160 ER 25 | 100,00 |
| 406.02.20.2 | BT 40 - 2 / 20 - 160 ER 32 | 102,00 |
| 406.02.26.2 | BT 40 - 3 / 26 - 160 ER 40 | 108,00 |



End mill holders DIN 6359 for end mills DIN 1835-B

JIS B 6339 AD  $\uparrow \leq 0,003$  G6,3 15.000 min<sup>-1</sup>

| Order no.   | Size             | GBP   |
|-------------|------------------|-------|
| 405.04.06   | BT 40 - 06 - 50  | 38,00 |
| 405.04.08   | BT 40 - 08 - 50  | 36,00 |
| 405.04.10   | BT 40 - 10 - 63  | 36,00 |
| 405.04.12   | BT 40 - 12 - 63  | 36,00 |
| 405.04.14   | BT 40 - 14 - 63  | 36,00 |
| 405.04.16   | BT 40 - 16 - 63  | 36,00 |
| 405.04.18   | BT 40 - 18 - 63  | 36,00 |
| 405.04.20   | BT 40 - 20 - 63  | 36,00 |
| 405.04.25   | BT 40 - 25 - 90  | 41,00 |
| 405.04.32   | BT 40 - 32 - 100 | 44,00 |
| 405.04.06.1 | BT 40 - 06 - 100 | 48,00 |
| 405.04.08.1 | BT 40 - 08 - 100 | 45,00 |
| 405.04.10.1 | BT 40 - 10 - 100 | 45,00 |
| 405.04.12.1 | BT 40 - 12 - 100 | 45,00 |
| 405.04.14.1 | BT 40 - 14 - 100 | 45,00 |
| 405.04.16.1 | BT 40 - 16 - 100 | 45,00 |
| 405.04.18.1 | BT 40 - 18 - 100 | 45,00 |
| 405.04.20.1 | BT 40 - 20 - 100 | 45,00 |



Collet chucks for collets DIN 6499 (ISO 15488) ER-system

JIS B 6339 AD/B  $\uparrow \leq 0,003$  G6,3 15.000 min<sup>-1</sup>

| Order no.      | Size                       | GBP    |
|----------------|----------------------------|--------|
| 406.02.07      | BT 40 - 1 / 7 - 55 ER 11   | 97,00  |
| 406.02.07.1    | BT 40 - 1 / 7 - 100 ER 11  | 116,00 |
| 406.02.07.2    | BT 40 - 1 / 7 - 160 ER 11  | 133,00 |
| 406.02.07.10   | BT 40 - 1 / 10 - 55 ER 16  | 97,00  |
| 406.02.07.10.1 | BT 40 - 1 / 10 - 100 ER 16 | 116,00 |
| 406.02.07.10.2 | BT 40 - 1 / 10 - 160 ER 16 | 133,00 |

With mini nut



Milling arbors for screw-in cutters

JIS B 6339 AD/B  $\uparrow \leq 0,003$  G6,3 15.000 min<sup>-1</sup>

| Order no.   | Size              | GBP    |
|-------------|-------------------|--------|
| 406.06.06   | BT 40 - M6 - 52   | 93,00  |
| 406.06.06.1 | BT 40 - M6 - 77   | 105,00 |
| 406.06.06.2 | BT 40 - M6 - 102  | 116,00 |
| 406.06.08   | BT 40 - M8 - 52   | 93,00  |
| 406.06.08.1 | BT 40 - M8 - 77   | 105,00 |
| 406.06.08.2 | BT 40 - M8 - 102  | 116,00 |
| 406.06.08.3 | BT 40 - M8 - 127  | 130,00 |
| 406.06.10   | BT 40 - M10 - 52  | 93,00  |
| 406.06.10.1 | BT 40 - M10 - 77  | 105,00 |
| 406.06.10.2 | BT 40 - M10 - 102 | 116,00 |
| 406.06.10.3 | BT 40 - M10 - 127 | 133,00 |
| 406.06.12   | BT 40 - M12 - 52  | 93,00  |
| 406.06.12.1 | BT 40 - M12 - 77  | 105,00 |
| 406.06.12.2 | BT 40 - M12 - 102 | 116,00 |
| 406.06.12.3 | BT 40 - M12 - 127 | 133,00 |
| 406.06.12.4 | BT 40 - M12 - 152 | 151,00 |
| 406.06.16   | BT 40 - M16 - 52  | 93,00  |
| 406.06.16.1 | BT 40 - M16 - 77  | 105,00 |
| 406.06.16.2 | BT 40 - M16 - 102 | 116,00 |
| 406.06.16.3 | BT 40 - M16 - 127 | 133,00 |
| 406.06.16.4 | BT 40 - M16 - 152 | 154,00 |
| 406.06.16.5 | BT 40 - M16 - 177 | 168,00 |

# K Toolholders JIS B 6339 (MAS 403 BT)



Collet chucks for collets KPS-system

JIS B 6339 AD  $\nearrow \leq 0,003$   $G_{2,5}$  30.000 min<sup>-1</sup>

| Order no.   | Size                        | GBP    |
|-------------|-----------------------------|--------|
| 405.03.10   | BT 40 - 1 / 10 - 60 KPS 10  | 126,00 |
| 405.03.16   | BT 40 - 4 / 16 - 60 KPS 16  | 129,00 |
| 405.03.10.1 | BT 40 - 1 / 10 - 90 KPS 10  | 136,00 |
| 405.03.16.1 | BT 40 - 4 / 16 - 90 KPS 16  | 138,00 |
| 405.03.10.2 | BT 40 - 1 / 10 - 120 KPS 10 | 145,00 |
| 405.03.16.2 | BT 40 - 4 / 16 - 120 KPS 16 | 147,00 |



Shell mill holders DIN 6357 with enlarged contact face and coolant exit bores on the end face

JIS B 6339 AD  $\nearrow \leq 0,005$   $G_{6,3}$  15.000 min<sup>-1</sup>

| Order no.   | Size             | GBP    |
|-------------|------------------|--------|
| 405.11.16   | BT 40 - 16 - 40  | 54,00  |
| 405.11.22   | BT 40 - 22 - 40  | 54,00  |
| 405.11.27   | BT 40 - 27 - 40  | 55,00  |
| 405.11.32   | BT 40 - 32 - 50  | 58,00  |
| 405.11.40   | BT 40 - 40 - 50  | 72,00  |
| 406.11.16.1 | BT 40 - 16 - 100 | 74,00  |
| 406.11.22.1 | BT 40 - 22 - 100 | 75,00  |
| 406.11.27.1 | BT 40 - 27 - 100 | 76,00  |
| 406.11.32.1 | BT 40 - 32 - 100 | 79,00  |
| 406.11.40.1 | BT 40 - 40 - 100 | 88,00  |
| 406.11.16.2 | BT 40 - 16 - 160 | 101,00 |
| 406.11.22.2 | BT 40 - 22 - 160 | 103,00 |
| 406.11.27.2 | BT 40 - 27 - 160 | 105,00 |
| 406.11.32.2 | BT 40 - 32 - 160 | 110,00 |
| 406.11.40.2 | BT 40 - 40 - 160 | 123,00 |



Quick change tapping chucks *with* length compensation on compression and expansion

JIS B 6339 Form A

| Order no. | Size                   | GBP    |
|-----------|------------------------|--------|
| 405.16.12 | BT 40 - M3 / M14 Gr. 1 | 188,00 |
| 405.16.20 | BT 40 - M5 / M22 Gr. 2 | 201,00 |



Adaptor sleeves for MT with tang DIN 6383

JIS B 6339 AD  $\nearrow \leq 0,005$   $G_{6,3}$  15.000 min<sup>-1</sup>

| Order no. | Size           | GBP   |
|-----------|----------------|-------|
| 405.07.01 | BT 40 - 1 - 50 | 38,00 |
| 405.07.02 | BT 40 - 2 - 50 | 38,00 |
| 405.07.03 | BT 40 - 3 - 70 | 38,00 |
| 405.07.04 | BT 40 - 4 - 95 | 41,00 |



CNC-Drill chucks for clockwise and counter clockwise rotation

JIS B 6339 AD  $\nearrow \leq 0,030$   $G_{6,3}$  15.000 min<sup>-1</sup>

| Order no. | Size                   | GBP    |
|-----------|------------------------|--------|
| 405.15.08 | BT 40 - 0,5 / 8 - 78   | 199,00 |
| 405.15.13 | BT 40 - 1,0 / 13 - 98  | 190,00 |
| 405.15.16 | BT 40 - 2,5 / 16 - 103 | 195,00 |

Delivery incl. wrench



Tapping chucks for synchronization for collets DIN 6499 (ISO 15488)

JIS B 6339 AD/B  $\nearrow \leq 0,003$   $G_{6,3}$  15.000 min<sup>-1</sup>

| Order no.    | Size                | GBP    |
|--------------|---------------------|--------|
| 406.16.02.10 | BT 40 - ER 16 - 79  | 278,00 |
| 406.16.02.13 | BT 40 - ER 20 - 85  | 285,00 |
| 406.16.02.16 | BT 40 - ER 25 - 89  | 285,00 |
| 406.16.02.20 | BT 40 - ER 32 - 110 | 285,00 |
| 406.16.02.26 | BT 40 - ER 40 - 115 | 299,00 |







Shrink chucks 4,5°

JIS B 6339 AD/B  $\leq 0,003$   $25.000 \text{ min}^{-1}$

| Order no.   | Size             | GBP    |
|-------------|------------------|--------|
| 406.70.03   | BT 40 - 03 - 80  | 113,00 |
| 406.70.04   | BT 40 - 04 - 80  | 113,00 |
| 406.70.05   | BT 40 - 05 - 80  | 113,00 |
| 406.70.06   | BT 40 - 06 - 90  | 95,00  |
| 406.70.08   | BT 40 - 08 - 90  | 95,00  |
| 406.70.10   | BT 40 - 10 - 90  | 95,00  |
| 406.70.12   | BT 40 - 12 - 90  | 95,00  |
| 406.70.14   | BT 40 - 14 - 90  | 95,00  |
| 406.70.16   | BT 40 - 16 - 90  | 95,00  |
| 406.70.18   | BT 40 - 18 - 90  | 95,00  |
| 406.70.20   | BT 40 - 20 - 90  | 95,00  |
| 406.70.25   | BT 40 - 25 - 100 | 95,00  |
| 406.70.32   | BT 40 - 32 - 100 | 95,00  |
|             |                  |        |
| 406.70.06.1 | BT 40 - 06 - 120 | 113,00 |
| 406.70.08.1 | BT 40 - 08 - 120 | 113,00 |
| 406.70.10.1 | BT 40 - 10 - 120 | 113,00 |
| 406.70.12.1 | BT 40 - 12 - 120 | 113,00 |
| 406.70.14.1 | BT 40 - 14 - 120 | 113,00 |
| 406.70.16.1 | BT 40 - 16 - 120 | 113,00 |
| 406.70.18.1 | BT 40 - 18 - 120 | 113,00 |
| 406.70.20.1 | BT 40 - 20 - 120 | 113,00 |
|             |                  |        |
| 406.70.06.2 | BT 40 - 06 - 160 | 173,00 |
| 406.70.08.2 | BT 40 - 08 - 160 | 173,00 |
| 406.70.10.2 | BT 40 - 10 - 160 | 173,00 |
| 406.70.12.2 | BT 40 - 12 - 160 | 173,00 |
| 406.70.14.2 | BT 40 - 14 - 160 | 173,00 |
| 406.70.16.2 | BT 40 - 16 - 160 | 173,00 |
| 406.70.18.2 | BT 40 - 18 - 160 | 173,00 |
| 406.70.20.2 | BT 40 - 20 - 160 | 173,00 |
| 406.70.25.2 | BT 40 - 25 - 160 | 177,00 |
| 406.70.32.2 | BT 40 - 32 - 160 | 177,00 |



Shrink chucks 4,5° with cooling channels

JIS B 6339 AD/B  $\leq 0,003$   $25.000 \text{ min}^{-1}$

| Order no.   | Size            | GBP    |
|-------------|-----------------|--------|
| 406.70.06.K | BT 40 - 06 - 90 | 122,00 |
| 406.70.08.K | BT 40 - 08 - 90 | 122,00 |
| 406.70.10.K | BT 40 - 10 - 90 | 122,00 |
| 406.70.12.K | BT 40 - 12 - 90 | 122,00 |
| 406.70.14.K | BT 40 - 14 - 90 | 122,00 |
| 406.70.16.K | BT 40 - 16 - 90 | 122,00 |
| 406.70.18.K | BT 40 - 18 - 90 | 122,00 |
| 406.70.20.K | BT 40 - 20 - 90 | 122,00 |



Shrink chucks 3° - slim

JIS B 6339 AD/B  $\leq 0,003$   $25.000 \text{ min}^{-1}$

| Order no.   | Size             | GBP    |
|-------------|------------------|--------|
| 406.72.03   | BT 40 - 03 - 80  | 122,00 |
| 406.72.04   | BT 40 - 04 - 80  | 122,00 |
| 406.72.05   | BT 40 - 05 - 80  | 122,00 |
| 406.72.06   | BT 40 - 06 - 90  | 103,00 |
| 406.72.08   | BT 40 - 08 - 90  | 103,00 |
| 406.72.10   | BT 40 - 10 - 90  | 103,00 |
| 406.72.12   | BT 40 - 12 - 90  | 103,00 |
|             |                  |        |
| 406.72.03.1 | BT 40 - 03 - 120 | 151,00 |
| 406.72.04.1 | BT 40 - 04 - 120 | 151,00 |
| 406.72.05.1 | BT 40 - 05 - 120 | 151,00 |
| 406.72.06.1 | BT 40 - 06 - 120 | 128,00 |
| 406.72.08.1 | BT 40 - 08 - 120 | 128,00 |
| 406.72.10.1 | BT 40 - 10 - 120 | 128,00 |
| 406.72.12.1 | BT 40 - 12 - 120 | 128,00 |
|             |                  |        |
| 406.72.06.2 | BT 40 - 06 - 160 | 187,00 |
| 406.72.08.2 | BT 40 - 08 - 160 | 187,00 |
| 406.72.10.2 | BT 40 - 10 - 160 | 187,00 |
| 406.72.12.2 | BT 40 - 12 - 160 | 187,00 |



Please check our main catalogue for more products and detailed information.



Collet chucks for collets DIN 6499 (ISO 15488) ER-system

ISO 12164-1 (DIN 69893-1) HSK - A  $\lambda \leq 0,003$  G6,3 15.000 min<sup>-1</sup>

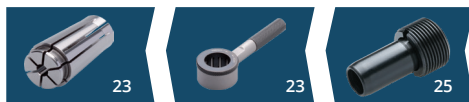
| Order no.   | Size                        | GBP    |
|-------------|-----------------------------|--------|
| A63.02.10.0 | HSK 63 - 1 / 10 - 75 ER 16  | 97,00  |
| A63.02.13.0 | HSK 63 - 2 / 13 - 75 ER 20  | 97,00  |
| A63.02.16.0 | HSK 63 - 2 / 16 - 75 ER 25  | 97,00  |
| A63.02.20.0 | HSK 63 - 2 / 20 - 75 ER 32  | 101,00 |
| A63.02.26.0 | HSK 63 - 3 / 26 - 85 ER 40  | 108,00 |
|             |                             |        |
| A63.02.10   | HSK 63 - 1 / 10 - 100 ER 16 | 97,00  |
| A63.02.13   | HSK 63 - 2 / 13 - 100 ER 20 | 97,00  |
| A63.02.16   | HSK 63 - 2 / 16 - 100 ER 25 | 97,00  |
| A63.02.20   | HSK 63 - 2 / 20 - 100 ER 32 | 101,00 |
| A63.02.26   | HSK 63 - 3 / 26 - 120 ER 40 | 108,00 |
|             |                             |        |
| A63.02.10.1 | HSK 63 - 1 / 10 - 160 ER 16 | 143,00 |
| A63.02.13.1 | HSK 63 - 2 / 13 - 160 ER 20 | 143,00 |
| A63.02.16.1 | HSK 63 - 2 / 16 - 160 ER 25 | 143,00 |
| A63.02.20.1 | HSK 63 - 2 / 20 - 160 ER 32 | 147,00 |
| A63.02.26.1 | HSK 63 - 3 / 26 - 160 ER 40 | 159,00 |
|             |                             |        |
| A63.02.10.3 | HSK 63 - 1 / 10 - 200 ER 16 | 188,00 |
| A63.02.13.3 | HSK 63 - 2 / 13 - 200 ER 20 | 188,00 |
| A63.02.16.3 | HSK 63 - 2 / 16 - 200 ER 25 | 188,00 |
| A63.02.20.3 | HSK 63 - 2 / 20 - 200 ER 32 | 188,00 |
| A63.02.26.3 | HSK 63 - 3 / 26 - 200 ER 40 | 199,00 |



Collet chucks for collets KPS-system

ISO 12164-1 (DIN 69893-1) HSK - A  $\lambda \leq 0,003$  G2,5 30.000 min<sup>-1</sup>

| Order no. | Size                         | GBP    |
|-----------|------------------------------|--------|
| A63.03.10 | HSK 63 - 1 / 10 - 100 KPS 10 | 147,00 |
| A63.03.16 | HSK 63 - 4 / 16 - 120 KPS 16 | 155,00 |



Collet chucks for collets DIN 6499 (ISO 15488) ER-system

ISO 12164-1 (DIN 69893-1) HSK - A  $\lambda \leq 0,003$  G2,5 30.000 min<sup>-1</sup>

| Order no.      | Size                        | GBP    |
|----------------|-----------------------------|--------|
| A63.02.07.1    | HSK 63 - 1 / 7 - 100 ER 11  | 155,00 |
| A63.02.07.2    | HSK 63 - 1 / 7 - 160 ER 11  | 177,00 |
|                |                             |        |
| A63.02.07.10.1 | HSK 63 - 1 / 10 - 100 ER 16 | 155,00 |
| A63.02.07.10.2 | HSK 63 - 1 / 10 - 160 ER 16 | 177,00 |

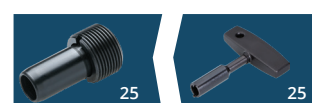
With mini nut



Milling arbors for screw-in cutters

ISO 12164-1 (DIN 69893-1) HSK - A  $\lambda \leq 0,003$  G6,3 15.000 min<sup>-1</sup>

| Order no.   | Size                     | GBP    |
|-------------|--------------------------|--------|
| A63.06.06   | HSK 63 - M6 - 51 - 25    | 168,00 |
| A63.06.08   | HSK 63 - M8 - 51 - 25    | 168,00 |
| A63.06.08.1 | HSK 63 - M8 - 76 - 50    | 183,00 |
| A63.06.08.2 | HSK 63 - M8 - 101 - 75   | 199,00 |
| A63.06.10   | HSK 63 - M10 - 51 - 25   | 168,00 |
| A63.06.10.1 | HSK 63 - M10 - 76 - 50   | 188,00 |
| A63.06.10.3 | HSK 63 - M10 - 126 - 100 | 228,00 |
| A63.06.10.5 | HSK 63 - M10 - 176 - 150 | 272,00 |
| A63.06.12   | HSK 63 - M12 - 51 - 25   | 168,00 |
| A63.06.12.1 | HSK 63 - M12 - 76 - 50   | 188,00 |
| A63.06.12.2 | HSK 63 - M12 - 101 - 75  | 207,00 |
| A63.06.12.3 | HSK 63 - M12 - 126 - 100 | 228,00 |
| A63.06.12.5 | HSK 63 - M12 - 176 - 150 | 272,00 |
| A63.06.16   | HSK 63 - M16 - 51 - 25   | 168,00 |
| A63.06.16.1 | HSK 63 - M16 - 76 - 50   | 188,00 |
| A63.06.16.2 | HSK 63 - M16 - 101 - 75  | 207,00 |
| A63.06.16.3 | HSK 63 - M16 - 126 - 100 | 228,00 |
| A63.06.16.5 | HSK 63 - M16 - 176 - 150 | 272,00 |





End mill holders DIN 6359 for end mills DIN 1835-B

ISO 12164-1 (DIN 69893-1) HSK - A  $\nearrow \leq 0,003$  G6,3 15.000 min<sup>-1</sup>

| Order no.   | Size              | GBP    |
|-------------|-------------------|--------|
| A63.04.06   | HSK 63 - 06 - 65  | 104,00 |
| A63.04.08   | HSK 63 - 08 - 65  | 97,00  |
| A63.04.10   | HSK 63 - 10 - 65  | 97,00  |
| A63.04.12   | HSK 63 - 12 - 80  | 97,00  |
| A63.04.14   | HSK 63 - 14 - 80  | 97,00  |
| A63.04.16   | HSK 63 - 16 - 80  | 97,00  |
| A63.04.18   | HSK 63 - 18 - 80  | 97,00  |
| A63.04.20   | HSK 63 - 20 - 80  | 97,00  |
| A63.04.25   | HSK 63 - 25 - 110 | 102,00 |
| A63.04.32   | HSK 63 - 32 - 110 | 109,00 |
| A63.04.40   | HSK 63 - 40 - 125 | 137,00 |
| A63.04.06.1 | HSK 63 - 06 - 100 | 121,00 |
| A63.04.08.1 | HSK 63 - 08 - 100 | 117,00 |
| A63.04.10.1 | HSK 63 - 10 - 100 | 117,00 |
| A63.04.12.1 | HSK 63 - 12 - 100 | 117,00 |
| A63.04.14.1 | HSK 63 - 14 - 100 | 117,00 |
| A63.04.16.1 | HSK 63 - 16 - 100 | 117,00 |
| A63.04.18.1 | HSK 63 - 18 - 100 | 117,00 |
| A63.04.20.1 | HSK 63 - 20 - 100 | 117,00 |



End mill holders DIN 6359 with coolant channels for end mills DIN 1835-B

ISO 12164-1 (DIN 69893-1) HSK - A  $\nearrow \leq 0,003$  G6,3 15.000 min<sup>-1</sup>

| Order no.     | Size              | GBP    |
|---------------|-------------------|--------|
| A63.04.06.K   | HSK 63 - 06 - 65  | 117,00 |
| A63.04.08.K   | HSK 63 - 08 - 65  | 110,00 |
| A63.04.10.K   | HSK 63 - 10 - 65  | 110,00 |
| A63.04.12.K   | HSK 63 - 12 - 80  | 110,00 |
| A63.04.14.K   | HSK 63 - 14 - 80  | 110,00 |
| A63.04.16.K   | HSK 63 - 16 - 80  | 110,00 |
| A63.04.18.K   | HSK 63 - 18 - 80  | 110,00 |
| A63.04.20.K   | HSK 63 - 20 - 80  | 110,00 |
| A63.04.25.K   | HSK 63 - 25 - 110 | 130,00 |
| A63.04.32.K   | HSK 63 - 32 - 110 | 137,00 |
| A63.04.40.K   | HSK 63 - 40 - 125 | 149,00 |
| A63.04.06.1.K | HSK 63 - 06 - 100 | 125,00 |
| A63.04.08.1.K | HSK 63 - 08 - 100 | 125,00 |
| A63.04.10.1.K | HSK 63 - 10 - 100 | 125,00 |
| A63.04.12.1.K | HSK 63 - 12 - 100 | 125,00 |
| A63.04.14.1.K | HSK 63 - 14 - 100 | 125,00 |
| A63.04.16.1.K | HSK 63 - 16 - 100 | 125,00 |
| A63.04.18.1.K | HSK 63 - 18 - 100 | 125,00 |
| A63.04.20.1.K | HSK 63 - 20 - 100 | 125,00 |



Shell mill holders DIN 6357 with enlarged contact face and coolant exit bores on the end face

ISO 12164-1 (DIN 69893-1) HSK - A  $\nearrow \leq 0,005$  G6,3 15.000 min<sup>-1</sup>

| Order no.   | Size              | GBP    |
|-------------|-------------------|--------|
| A63.11.16   | HSK 63 - 16 - 50  | 118,00 |
| A63.11.22   | HSK 63 - 22 - 50  | 118,00 |
| A63.11.27   | HSK 63 - 27 - 60  | 118,00 |
| A63.11.32   | HSK 63 - 32 - 60  | 122,00 |
| A63.11.40   | HSK 63 - 40 - 60  | 154,00 |
| A63.11.16.1 | HSK 63 - 16 - 100 | 143,00 |
| A63.11.22.1 | HSK 63 - 22 - 100 | 143,00 |
| A63.11.27.1 | HSK 63 - 27 - 100 | 143,00 |
| A63.11.32.1 | HSK 63 - 32 - 100 | 147,00 |
| A63.11.40.1 | HSK 63 - 40 - 100 | 182,00 |



CNC-Drill chucks for clockwise and counter clockwise rotation

ISO 12164-1 (DIN 69893-1) HSK - A  $\nearrow \leq 0,030$  G6,3 15.000 min<sup>-1</sup>

| Order no. | Size                   | GBP    |
|-----------|------------------------|--------|
| A63.15.08 | HSK 63 - 0,5/ 8 - 85   | 336,00 |
| A63.15.13 | HSK 63 - 1,0/ 13 - 104 | 315,00 |
| A63.15.16 | HSK 63 - 2,5/ 16 - 109 | 336,00 |

Delivery incl. wrench



With centre coolant



# Toolholders DIN 69893-1 / ISO 12164-1 (HSK-A) Shrink chucks



Shrink chucks 4,5°

ISO 12164-1 (DIN 69893-1) HSK - A  $\lambda \leq 0,003$  G2,5 25.000 min<sup>-1</sup>

| Order no.   | Size              | GBP    |
|-------------|-------------------|--------|
| A63.70.03   | HSK 63 - 03 - 80  | 147,00 |
| A63.70.04   | HSK 63 - 04 - 80  | 147,00 |
| A63.70.05   | HSK 63 - 05 - 80  | 147,00 |
| A63.70.06   | HSK 63 - 06 - 80  | 129,00 |
| A63.70.08   | HSK 63 - 08 - 80  | 129,00 |
| A63.70.10   | HSK 63 - 10 - 85  | 129,00 |
| A63.70.12   | HSK 63 - 12 - 90  | 129,00 |
| A63.70.14   | HSK 63 - 14 - 90  | 129,00 |
| A63.70.16   | HSK 63 - 16 - 95  | 129,00 |
| A63.70.18   | HSK 63 - 18 - 95  | 129,00 |
| A63.70.20   | HSK 63 - 20 - 100 | 129,00 |
| A63.70.25   | HSK 63 - 25 - 115 | 129,00 |
| A63.70.32   | HSK 63 - 32 - 120 | 129,00 |
|             |                   |        |
| A63.70.03.1 | HSK 63 - 03 - 120 | 166,00 |
| A63.70.04.1 | HSK 63 - 04 - 120 | 166,00 |
| A63.70.05.1 | HSK 63 - 05 - 120 | 166,00 |
| A63.70.06.1 | HSK 63 - 06 - 120 | 147,00 |
| A63.70.08.1 | HSK 63 - 08 - 120 | 147,00 |
| A63.70.10.1 | HSK 63 - 10 - 120 | 147,00 |
| A63.70.12.1 | HSK 63 - 12 - 120 | 147,00 |
| A63.70.14.1 | HSK 63 - 14 - 120 | 147,00 |
| A63.70.16.1 | HSK 63 - 16 - 120 | 147,00 |
| A63.70.18.1 | HSK 63 - 18 - 120 | 147,00 |
| A63.70.20.1 | HSK 63 - 20 - 120 | 147,00 |
|             |                   |        |
| A63.70.03.2 | HSK 63 - 03 - 160 | 213,00 |
| A63.70.04.2 | HSK 63 - 04 - 160 | 213,00 |
| A63.70.05.2 | HSK 63 - 05 - 160 | 213,00 |
| A63.70.06.2 | HSK 63 - 06 - 160 | 193,00 |
| A63.70.08.2 | HSK 63 - 08 - 160 | 193,00 |
| A63.70.10.2 | HSK 63 - 10 - 160 | 193,00 |
| A63.70.12.2 | HSK 63 - 12 - 160 | 193,00 |
| A63.70.14.2 | HSK 63 - 14 - 160 | 193,00 |
| A63.70.16.2 | HSK 63 - 16 - 160 | 193,00 |
| A63.70.18.2 | HSK 63 - 18 - 160 | 193,00 |
| A63.70.20.2 | HSK 63 - 20 - 160 | 193,00 |
| A63.70.25.2 | HSK 63 - 25 - 160 | 193,00 |
| A63.70.32.2 | HSK 63 - 32 - 160 | 193,00 |



Shrink chucks 4,5° with cooling channels

ISO 12164-1 (DIN 69893-1) HSK - A  $\lambda \leq 0,003$  G2,5 25.000 min<sup>-1</sup>

| Order no.     | Size              | GBP    |
|---------------|-------------------|--------|
| A63.70.06.K   | HSK 63 - 06 - 80  | 164,00 |
| A63.70.08.K   | HSK 63 - 08 - 80  | 164,00 |
| A63.70.10.K   | HSK 63 - 10 - 85  | 164,00 |
| A63.70.12.K   | HSK 63 - 12 - 90  | 164,00 |
| A63.70.14.K   | HSK 63 - 14 - 90  | 164,00 |
| A63.70.16.K   | HSK 63 - 16 - 95  | 164,00 |
| A63.70.18.K   | HSK 63 - 18 - 95  | 164,00 |
| A63.70.20.K   | HSK 63 - 20 - 100 | 164,00 |
|               |                   |        |
| A63.70.06.1.K | HSK 63 - 06 - 120 | 179,00 |
| A63.70.08.1.K | HSK 63 - 08 - 120 | 179,00 |
| A63.70.10.1.K | HSK 63 - 10 - 120 | 179,00 |
| A63.70.12.1.K | HSK 63 - 12 - 120 | 179,00 |
| A63.70.14.1.K | HSK 63 - 14 - 120 | 179,00 |
| A63.70.16.1.K | HSK 63 - 16 - 120 | 179,00 |
| A63.70.18.1.K | HSK 63 - 18 - 120 | 179,00 |
| A63.70.20.1.K | HSK 63 - 20 - 120 | 179,00 |



Shrink chucks 3° - slim

ISO 12164-1 (DIN 69893-1) HSK - A  $\lambda \leq 0,003$  G2,5 25.000 min<sup>-1</sup>

| Order no.   | Size              | GBP    |
|-------------|-------------------|--------|
| A63.72.03   | HSK 63 - 03 - 80  | 159,00 |
| A63.72.04   | HSK 63 - 04 - 80  | 159,00 |
| A63.72.05   | HSK 63 - 05 - 80  | 159,00 |
| A63.72.06   | HSK 63 - 06 - 80  | 139,00 |
| A63.72.08   | HSK 63 - 08 - 80  | 139,00 |
| A63.72.10   | HSK 63 - 10 - 85  | 139,00 |
| A63.72.12   | HSK 63 - 12 - 90  | 139,00 |
|             |                   |        |
| A63.72.03.1 | HSK 63 - 03 - 120 | 192,00 |
| A63.72.04.1 | HSK 63 - 04 - 120 | 192,00 |
| A63.72.05.1 | HSK 63 - 05 - 120 | 192,00 |
| A63.72.06.1 | HSK 63 - 06 - 120 | 167,00 |
| A63.72.08.1 | HSK 63 - 08 - 120 | 167,00 |
| A63.72.10.1 | HSK 63 - 10 - 120 | 167,00 |
| A63.72.12.1 | HSK 63 - 12 - 120 | 167,00 |
|             |                   |        |
| A63.72.04.2 | HSK 63 - 04 - 160 | 229,00 |
| A63.72.05.2 | HSK 63 - 05 - 160 | 229,00 |
| A63.72.06.2 | HSK 63 - 06 - 160 | 209,00 |
| A63.72.08.2 | HSK 63 - 08 - 160 | 209,00 |
| A63.72.10.2 | HSK 63 - 10 - 160 | 209,00 |
| A63.72.12.2 | HSK 63 - 12 - 160 | 209,00 |



Collet chucks for collets  
DIN6499 (ISO 15488) ER-system

ISO 12164-1 (DIN 69893-1) HSK - F  $\nearrow \leq 0,003$  G2,5 25.000 min<sup>-1</sup>

| Order no.   | Size                        | GBP    |
|-------------|-----------------------------|--------|
| F63.02.10   | HSK 63 - 1 / 10 - 60 ER 16  | 93,00  |
| F63.02.16   | HSK 63 - 2 / 16 - 70 ER 25  | 93,00  |
| F63.02.20   | HSK 63 - 2 / 20 - 70 ER 32  | 97,00  |
| F63.02.26   | HSK 63 - 3 / 26 - 75 ER 40  | 104,00 |
|             |                             |        |
| F63.02.10.1 | HSK 63 - 1 / 10 - 100 ER 16 | 95,00  |
| F63.02.16.1 | HSK 63 - 2 / 16 - 100 ER 25 | 95,00  |
| F63.02.20.1 | HSK 63 - 2 / 20 - 100 ER 32 | 99,00  |
| F63.02.26.1 | HSK 63 - 3 / 26 - 100 ER 40 | 106,00 |
|             |                             |        |
| F63.02.10.2 | HSK 63 - 1 / 10 - 160 ER 16 | 140,00 |
| F63.02.16.2 | HSK 63 - 2 / 16 - 160 ER 25 | 140,00 |
| F63.02.20.2 | HSK 63 - 2 / 20 - 160 ER 32 | 144,00 |
| F63.02.26.2 | HSK 63 - 3 / 26 - 160 ER 40 | 155,00 |



End mill holders DIN 6359  
for end mills DIN 1835-B

ISO 12164-1 (DIN 69893-1) HSK - F  $\nearrow \leq 0,003$  G2,5 25.000 min<sup>-1</sup>

| Order no. | Size              | GBP    |
|-----------|-------------------|--------|
| F63.04.06 | HSK 63 - 06 - 65  | 99,00  |
| F63.04.08 | HSK 63 - 08 - 65  | 99,00  |
| F63.04.10 | HSK 63 - 10 - 65  | 99,00  |
| F63.04.12 | HSK 63 - 12 - 80  | 99,00  |
| F63.04.14 | HSK 63 - 14 - 80  | 99,00  |
| F63.04.16 | HSK 63 - 16 - 80  | 99,00  |
| F63.04.18 | HSK 63 - 18 - 80  | 99,00  |
| F63.04.20 | HSK 63 - 20 - 80  | 99,00  |
| F63.04.25 | HSK 63 - 25 - 110 | 116,00 |
| F63.04.32 | HSK 63 - 32 - 110 | 123,00 |



Shell mill holders DIN 6357 with  
enlarged contact face and coolant  
exit bores on the end face

ISO 12164-1 (DIN 69893-1) HSK - F  $\nearrow \leq 0,005$  G2,5 25.000 min<sup>-1</sup>

| Order no.   | Size              | GBP    |
|-------------|-------------------|--------|
| F63.11.16   | HSK 63 - 16 - 50  | 116,00 |
| F63.11.22   | HSK 63 - 22 - 50  | 116,00 |
| F63.11.27   | HSK 63 - 27 - 60  | 116,00 |
| F63.11.32   | HSK 63 - 32 - 60  | 120,00 |
| F63.11.40   | HSK 63 - 40 - 100 | 178,00 |
|             |                   |        |
| F63.11.16.1 | HSK 63 - 16 - 100 | 140,00 |
| F63.11.22.1 | HSK 63 - 22 - 100 | 140,00 |
| F63.11.27.1 | HSK 63 - 27 - 100 | 140,00 |
| F63.11.32.1 | HSK 63 - 32 - 100 | 145,00 |
|             |                   |        |
| F63.11.16.2 | HSK 63 - 16 - 160 | 210,00 |
| F63.11.22.2 | HSK 63 - 22 - 160 | 210,00 |
| F63.11.27.2 | HSK 63 - 27 - 160 | 210,00 |



Shrink chucks 4,5°

ISO 12164-1 (DIN 69893-1) HSK - F  $\nearrow \leq 0,003$  G2,5 25.000 min<sup>-1</sup>

| Order no.   | Size              | GBP    |
|-------------|-------------------|--------|
| F63.70.03   | HSK 63 - 03 - 80  | 167,00 |
| F63.70.04   | HSK 63 - 04 - 80  | 167,00 |
| F63.70.05   | HSK 63 - 05 - 80  | 167,00 |
| F63.70.06   | HSK 63 - 06 - 80  | 145,00 |
| F63.70.08   | HSK 63 - 08 - 80  | 145,00 |
| F63.70.10   | HSK 63 - 10 - 85  | 145,00 |
| F63.70.12   | HSK 63 - 12 - 90  | 145,00 |
| F63.70.14   | HSK 63 - 14 - 95  | 145,00 |
| F63.70.16   | HSK 63 - 16 - 95  | 145,00 |
| F63.70.18   | HSK 63 - 18 - 95  | 145,00 |
| F63.70.20   | HSK 63 - 20 - 100 | 145,00 |
| F63.70.25   | HSK 63 - 25 - 115 | 145,00 |
| F63.70.32   | HSK 63 - 32 - 125 | 145,00 |
|             |                   |        |
| F63.70.03.1 | HSK 63 - 03 - 120 | 188,00 |
| F63.70.04.1 | HSK 63 - 04 - 120 | 188,00 |
| F63.70.05.1 | HSK 63 - 05 - 120 | 188,00 |
| F63.70.06.1 | HSK 63 - 06 - 120 | 167,00 |
| F63.70.08.1 | HSK 63 - 08 - 120 | 167,00 |
| F63.70.10.1 | HSK 63 - 10 - 120 | 167,00 |
| F63.70.12.1 | HSK 63 - 12 - 120 | 167,00 |
| F63.70.14.1 | HSK 63 - 14 - 120 | 167,00 |
| F63.70.16.1 | HSK 63 - 16 - 120 | 167,00 |
| F63.70.18.1 | HSK 63 - 18 - 120 | 167,00 |
| F63.70.20.1 | HSK 63 - 20 - 120 | 167,00 |

# K Toolholders with polygonal shank ISO 26623



Collet chucks for collets DIN 6499 (ISO 15488) ER-system

| ISO 26623    | $\nabla \leq 0,003$     | G2,5<br>25.000 min <sup>-1</sup> |
|--------------|-------------------------|----------------------------------|
| Order no.    | Size                    | GBP                              |
| C3.02.10 *   | C3 - 1 / 10 - 45 ER 16  | 248,00                           |
| C3.02.13     | C3 - 2 / 13 - 45 ER 20  | 248,00                           |
| C4.02.10 *   | C4 - 1 / 10 - 70 ER 16  | 260,00                           |
| C4.02.13     | C4 - 2 / 13 - 52 ER 20  | 260,00                           |
| C4.02.16     | C4 - 2 / 16 - 52 ER 25  | 260,00                           |
| C4.02.20     | C4 - 2 / 20 - 54 ER 32  | 260,00                           |
| C5.02.10.1 * | C5 - 1 / 10 - 100 ER 16 | 274,00                           |
| C5.02.13     | C5 - 2 / 13 - 55 ER 20  | 274,00                           |
| C5.02.13.1   | C5 - 2 / 13 - 100 ER 20 | 274,00                           |
| C5.02.16     | C5 - 2 / 16 - 55 ER 25  | 274,00                           |
| C5.02.20     | C5 - 2 / 20 - 57 ER 32  | 274,00                           |
| C5.02.20.1   | C5 - 2 / 20 - 100 ER 32 | 274,00                           |
| C6.02.16     | C6 - 2 / 16 - 60 ER 25  | 197,00                           |
| C6.02.20     | C6 - 2 / 20 - 70 ER 32  | 197,00                           |
| C6.02.26     | C6 - 3 / 26 - 65 ER 40  | 210,00                           |
| C6.02.10.1 * | C6 - 1 / 10 - 100 ER 16 | 218,00                           |
| C6.02.16.1   | C6 - 2 / 16 - 100 ER 25 | 218,00                           |
| C6.02.20.1   | C6 - 2 / 20 - 100 ER 32 | 224,00                           |

\* Hexagonal clamping nut



Coolant tubes

| ISO 26623 |      |       |
|-----------|------|-------|
| Order no. | Size | GBP   |
| C6.700    | C6   | 49,00 |



Key for coolant tubes

| Order no. | Size | GBP   |
|-----------|------|-------|
| C6.701    | C6   | 21,00 |



End mill holders DIN 6359 for end mills DIN 1835-B

| ISO 26623 | $\nabla \leq 0,003$ | G2,5<br>25.000 min <sup>-1</sup> |
|-----------|---------------------|----------------------------------|
| Order no. | Size                | GBP                              |
| C3.04.06  | C3 - 06 - 45        | 227,00                           |
| C3.04.08  | C3 - 08 - 45        | 227,00                           |
| C3.04.10  | C3 - 10 - 50        | 227,00                           |
| C3.04.12  | C3 - 12 - 55        | 227,00                           |
| C4.04.06  | C4 - 06 - 50        | 239,00                           |
| C4.04.08  | C4 - 08 - 50        | 239,00                           |
| C4.04.10  | C4 - 10 - 50        | 239,00                           |
| C4.04.12  | C4 - 12 - 55        | 239,00                           |
| C4.04.14  | C4 - 14 - 55        | 239,00                           |
| C4.04.16  | C4 - 16 - 55        | 239,00                           |
| C5.04.06  | C5 - 06 - 50        | 252,00                           |
| C5.04.08  | C5 - 08 - 50        | 252,00                           |
| C5.04.10  | C5 - 10 - 55        | 252,00                           |
| C5.04.12  | C5 - 12 - 60        | 252,00                           |
| C5.04.14  | C5 - 14 - 60        | 252,00                           |
| C5.04.16  | C5 - 16 - 60        | 252,00                           |
| C5.04.18  | C5 - 18 - 60        | 252,00                           |
| C5.04.20  | C5 - 20 - 60        | 252,00                           |
| C5.04.25  | C5 - 25 - 80        | 252,00                           |
| C6.04.06  | C6 - 06 - 55        | 202,00                           |
| C6.04.08  | C6 - 08 - 55        | 202,00                           |
| C6.04.10  | C6 - 10 - 60        | 202,00                           |
| C6.04.12  | C6 - 12 - 60        | 202,00                           |
| C6.04.14  | C6 - 14 - 60        | 202,00                           |
| C6.04.16  | C6 - 16 - 65        | 202,00                           |
| C6.04.18  | C6 - 18 - 65        | 202,00                           |
| C6.04.20  | C6 - 20 - 65        | 202,00                           |
| C6.04.25  | C6 - 25 - 80        | 202,00                           |
| C6.04.32  | C6 - 32 - 90        | 202,00                           |
| C6.04.40  | C6 - 40 - 100       | 202,00                           |



CNC-Drill chucks for clockwise and counter clockwise rotation

| ISO 26623 | $\nabla \leq 0,003$ | G2,5<br>25.000 min <sup>-1</sup> |
|-----------|---------------------|----------------------------------|
| Order no. | Size                | GBP                              |
| C6.15.13  | C6 - 1,0/ 13 - 112  | 515,00                           |
| C6.15.16  | C6 - 2,5 / 16 - 117 | 520,00                           |

With central coolant



Shell mill holders DIN 6357 with enlarged contact face

| ISO 26623 |              | $\lambda \leq 0,005$ | $G2,5$<br>25.000 min <sup>-1</sup> |
|-----------|--------------|----------------------|------------------------------------|
| Order no. | Size         | GBP                  |                                    |
| C3.11.16  | C3 - 16 - 30 | 213,00               |                                    |
| C4.11.16  | C4 - 16 - 35 | 222,00               |                                    |
| C4.11.22  | C4 - 22 - 40 | 222,00               |                                    |
| C5.11.16  | C5 - 16 - 35 | 235,00               |                                    |
| C5.11.22  | C5 - 22 - 40 | 235,00               |                                    |
| C5.11.27  | C5 - 27 - 40 | 235,00               |                                    |
| C5.11.32  | C5 - 32 - 40 | 235,00               |                                    |
| C6.11.16  | C6 - 16 - 35 | 231,00               |                                    |
| C6.11.22  | C6 - 22 - 40 | 231,00               |                                    |
| C6.11.27  | C6 - 27 - 40 | 231,00               |                                    |
| C6.11.32  | C6 - 32 - 40 | 231,00               |                                    |
| C6.11.40  | C6 - 40 - 45 | 231,00               |                                    |



Shrink chucks 4,5°

| ISO 26623 |               | $\lambda \leq 0,003$ | $G2,5$<br>25.000 min <sup>-1</sup> |
|-----------|---------------|----------------------|------------------------------------|
| Order no. | Size          | GBP                  |                                    |
| C3.70.06  | C3 - 06 - 60  | 340,00               |                                    |
| C3.70.08  | C3 - 08 - 107 | 340,00               |                                    |
| C3.70.10  | C3 - 10 - 95  | 324,00               |                                    |
| C3.70.12  | C3 - 12 - 84  | 324,00               |                                    |
| C4.70.06  | C4 - 06 - 75  | 340,00               |                                    |
| C4.70.08  | C4 - 08 - 75  | 340,00               |                                    |
| C4.70.10  | C4 - 10 - 75  | 324,00               |                                    |
| C4.70.12  | C4 - 12 - 75  | 324,00               |                                    |
| C4.70.14  | C4 - 14 - 80  | 324,00               |                                    |
| C4.70.16  | C4 - 16 - 80  | 324,00               |                                    |
| C4.70.18  | C4 - 18 - 80  | 324,00               |                                    |
| C4.70.20  | C4 - 20 - 85  | 324,00               |                                    |
| C5.70.06  | C5 - 06 - 75  | 357,00               |                                    |
| C5.70.08  | C5 - 08 - 75  | 357,00               |                                    |
| C5.70.10  | C5 - 10 - 75  | 340,00               |                                    |
| C5.70.12  | C5 - 12 - 75  | 340,00               |                                    |
| C5.70.14  | C5 - 14 - 80  | 340,00               |                                    |
| C5.70.16  | C5 - 16 - 80  | 340,00               |                                    |
| C5.70.18  | C5 - 18 - 80  | 340,00               |                                    |
| C5.70.20  | C5 - 20 - 85  | 340,00               |                                    |
| C5.70.25  | C5 - 25 - 90  | 374,00               |                                    |
| C6.70.06  | C6 - 06 - 80  | 288,00               |                                    |
| C6.70.08  | C6 - 08 - 80  | 288,00               |                                    |
| C6.70.10  | C6 - 10 - 80  | 275,00               |                                    |
| C6.70.12  | C6 - 12 - 80  | 275,00               |                                    |
| C6.70.14  | C6 - 14 - 85  | 275,00               |                                    |
| C6.70.16  | C6 - 16 - 85  | 275,00               |                                    |
| C6.70.18  | C6 - 18 - 85  | 275,00               |                                    |
| C6.70.20  | C6 - 20 - 85  | 275,00               |                                    |
| C6.70.25  | C6 - 25 - 90  | 302,00               |                                    |
| C6.70.32  | C6 - 32 - 95  | 302,00               |                                    |



Quick change tapping chucks with length compensation on compression and expansion

| ISO 26623 |                      | $G2,5$<br>25.000 min <sup>-1</sup> |
|-----------|----------------------|------------------------------------|
| Order no. | Size                 | GBP                                |
| C4.16.12  | C4 - M3 / M14 Gr. 1  | 682,00                             |
| C4.16.20  | C4 - M5 / M22 Gr. 2  | 791,00                             |
| C5.16.12  | C5 - M3 / M14 Gr. 1  | 714,00                             |
| C5.16.20  | C5 - M5 / M22 Gr. 2  | 798,00                             |
| C6.16.12  | C6 - M3 / M14 Gr. 1  | 756,00                             |
| C6.16.20  | C6 - M5 / M22 Gr. 2  | 882,00                             |
| C6.16.36  | C6 - M14 / M36 Gr. 3 | 1103,00                            |

# K Standard ER Collets



Collets DIN 6499 B (ISO 15488 B)  
ER-system

ISO 15488 B  
DIN 6499 B

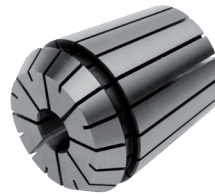
ER

$\nearrow \leq 0,015$

| Order no.         | Size    | GBP   |
|-------------------|---------|-------|
| 4008E - Ø (ER11)* | 1 - 1,5 | 21,81 |
| 4008E - Ø*        | 2 - 7   | 18,55 |
| 426E - Ø (ER 16)  | 1       | 18,25 |
| 426E - Ø          | 2 - 10  | 18,25 |
| 428E - Ø (ER 20)  | 2 - 13  | 18,25 |

1 mm steps

\*0,5 mm steps



Collets DIN 6499 B (ISO 15488 B)  
ER-system

ISO 15488 B  
DIN 6499 B

ER

$\nearrow \leq 0,015$

| Order no.        | Size   | GBP   |
|------------------|--------|-------|
| 430E - Ø (ER 25) | 2      | 18,25 |
| 430E - Ø         | 3 - 16 | 18,25 |
| 470E - Ø (ER 32) | 2      | 18,25 |
| 470E - Ø         | 3 - 20 | 18,25 |
| 472E - Ø (ER 40) | 3      | 18,25 |
| 472E - Ø         | 4 - 26 | 18,25 |

1 mm steps



Collet sets in wooden sockets

| Order no. | Size  | $\nearrow \leq 0,015$ |
|-----------|---|-----------------------|
| 4008E - S | 4008 E (ER 11; 13 tlg.) 1-1,5-2-2,5-3-3,5-4-4,5-5-5,5-6-6,5-7                         | 147,00                |
| 426E - S  | 426 E (ER 16; 10 tlg.) 1-2-3-4-5-6-7-8-9-10   | 100,00                |
| 428E - S  | 428 E (ER 20; 12 tlg.) 2-3-4-5-6-7-8-9-10-11-12-13                                    | 152,00                |
| 430E - S  | 430 E (ER 25; 15 tlg.) 2-3-4-5-6-7-8-9-10-11-12-13-14-15-16                           | 162,00                |
| 470E - S  | 470 E (ER 32; 18 tlg.) 3-4-5-6-7-8-9-10-11-12-13-14-15-16-17-18-19-20                 | 208,00                |
| 472E - S  | 472 E (ER 40; 23 tlg.) 4-5-6-7-8-9-10-11-12-13-14-15-16-17-18-19-20-21-22-23-24-25-26 | 314,00                |



Collet sets in wooden boxes

| Order no.  | Size   | $\nearrow \leq 0,015$ |
|------------|--|-----------------------|
| 701.4008.1 | 4008E (ER 11; 13 tlg.) 1-1,5-2-2,5-3-3,5-4-4,5-5-5,5-6-6,5-7   | 183,00                |
| 701.426.1  | 426E (ER 16; 10 St.) 1-2-3-4-5-6-7-8-9-10                      | 140,00                |
| 701.428.1  | 428E (ER 20; 12 tlg.) 2-3-4-5-6-7-8-9-10-11-12-13              | 192,00                |
| 701.430.1  | 430E (ER 25; 15 St.) 2-3-4-5-6-7-8-9-10-11-12-13-14-15-16      | 202,00                |
| 701.470.1  | 470E (ER 32; 15 St.) 3-4-5-6-7-8-9-10-11-12-14-15-16-18-20     | 214,00                |
| 701.472.1  | 472E (ER 40; 16 St.) 4-5-6-7-8-9-10-11-12-14-16-18-20-22-24-26 | 259,00                |





Collets with cooling channels  
DIN 6499 B (ISO 15488 B) ER-system



1 mm steps

$\nearrow \leq 0,015$

| Order no.         | Size   | GBP   |
|-------------------|--------|-------|
| 426EC - Ø (ER 16) | 3 - 7  | 38,00 |
| 428EC - Ø (ER 20) | 4 - 9  | 40,00 |
| 430EC - Ø (ER 25) | 3 - 14 | 42,00 |
| 470EC - Ø (ER 32) | 3 - 20 | 46,00 |
| 472EC - Ø (ER 40) | 4 - 26 | 53,00 |

**Note:** Only nominal size d can be clamped, with cooling channels



Collet sets in wooden sockets with cooling channels  
DIN 6499 B (ISO 15488 B) ER-system

$\nearrow \leq 0,015$

| Order no. | Size   | GBP    |
|-----------|--|--------|
| 426EC-S   | 426E (ER 16; 5 St.) 3-4-5-6-7                                  | 190,00 |
| 428EC-S   | 428E (ER 20; 6 St.) 4-5-6-7-8-9                                | 240,00 |
| 430EC-S   | 430E (ER 25; 12 St.) 3-4-5-6-7-8-9-10-11-12-13-14              | 504,00 |
| 470EC-S   | 470E (ER 32; 15 St.) 3-4-5-6-7-8-9-10-11-12-14-15-16-18-20     | 690,00 |
| 472EC-S   | 472E (ER 40; 16 St.) 4-5-6-7-8-9-10-11-12-14-16-18-20-22-24-26 | 848,00 |



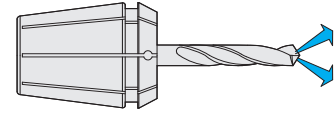
Collet sets in wooden boxes with cooling channels  
DIN 6499 B (ISO 15488 B) ER-system

$\nearrow \leq 0,015$

| Order no.   | Size   | GBP    |
|-------------|--|--------|
| 701.426EC.1 | 426E (ER 16; 5 St.) 3-4-5-6-7                                  | 190,00 |
| 701.428EC.1 | 428E (ER 20; 6 St.) 4-5-6-7-8-9                                | 240,00 |
| 701.430EC.1 | 430E (ER 25; 12 St.) 3-4-5-6-7-8-9-10-11-12-13-14              | 504,00 |
| 701.470EC.1 | 470E (ER 32; 15 St.) 3-4-5-6-7-8-9-10-11-12-14-15-16-18-20     | 690,00 |
| 701.472EC.1 | 472E (ER 40; 16 St.) 4-5-6-7-8-9-10-11-12-14-16-18-20-22-24-26 | 848,00 |



Collets sealed with seal for IC DIN 6499 B (ISO 15488 B) ER-system



1 mm steps

$\nearrow \leq 0,015$

| Order no.         | Size   | GBP   |
|-------------------|--------|-------|
| 426EA - Ø (ER 16) | 3 - 10 | 36,00 |
| 428EA - Ø (ER 20) | 3 - 13 | 38,00 |
| 430EA - Ø (ER 25) | 3 - 16 | 40,00 |
| 470EA - Ø (ER 32) | 3 - 20 | 44,00 |
| 472EA - Ø (ER 40) | 3 - 26 | 51,00 |

**Note:** Only nominal size *d* can be clamped with sealing plug for internal cooling (applicable up to 21 bar)



Collet sets in wooden sockets sealed with seal for IC DIN 6499 B (ISO 15488 B) ER-system

$\nearrow \leq 0,015$

| Order no. | Size   | GBP    |
|-----------|--|--------|
| 426EA-S   | 426E (ER 16; 8 St.) 3-4-5-6-7-8-9-10                           | 288,00 |
| 428EA-S   | 428E (ER 20; 11 St.) 3-4-5-6-7-8-9-10-11-12-13                 | 418,00 |
| 430EA-S   | 430E (ER 25; 14 St.) 3-4-5-6-7-8-9-10-11-12-13-14-15-16        | 560,00 |
| 470EA-S   | 470E (ER 32; 15 St.) 3-4-5-6-7-8-9-10-11-12-14-15-16-18-20     | 660,00 |
| 472EA-S   | 472E (ER 40; 16 St.) 4-5-6-7-8-9-10-11-12-14-16-18-20-22-24-26 | 816,00 |



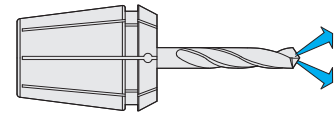
Collet sets in wooden boxes collets sealed with seal for IC DIN 6499 B (ISO 15488 B) ER-system

$\nearrow \leq 0,015$

| Order no.   | Size   | GBP    |
|-------------|--|--------|
| 701.426EA.1 | 426E (ER 16; 8 St.) 3-4-5-6-7-8-9-10                           | 288,00 |
| 701.428EA.1 | 428E (ER 20; 11 St.) 3-4-5-6-7-8-9-10-11-12-13                 | 418,00 |
| 701.430EA.1 | 430E (ER 25; 14 St.) 3-4-5-6-7-8-9-10-11-12-13-14-15-16        | 560,00 |
| 701.470EA.1 | 470E (ER 32; 15 St.) 3-4-5-6-7-8-9-10-11-12-14-15-16-18-20     | 660,00 |
| 701.472EA.1 | 472E (ER 40; 16 St.) 4-5-6-7-8-9-10-11-12-14-16-18-20-22-24-26 | 816,00 |



Collets sealed for high pressure cooling 120 bar with IC DIN 6499 B (ISO 15488 B) ER-system



1 mm steps

$\nearrow \leq 0,015$

| Order no.         | Size   | GBP   |
|-------------------|--------|-------|
| 426EH - Ø (ER 16) | 3 - 10 | 42,00 |
| 428EH - Ø (ER 20) | 3 - 13 | 44,00 |
| 430EH - Ø (ER 25) | 3 - 16 | 46,00 |
| 470EH - Ø (ER 32) | 3 - 20 | 49,00 |
| 472EH - Ø (ER 40) | 4 - 26 | 58,00 |

**Note:** Only nominal size d can be clamped



Collets sealed for high pressure cooling 120 bar in wooden sockets with IC DIN 6499 B (ISO 15488 B) ER-system

$\nearrow \leq 0,015$

| Order no. | Size   | GBP    |
|-----------|--|--------|
| 426EH-S   | 426E (ER 16; 8 St.) 3-4-5-6-7-8-9-10                           | 336,00 |
| 428EH-S   | 428E (ER 20; 11 St.) 3-4-5-6-7-8-9-10-11-12-13                 | 484,00 |
| 430EH-S   | 430E (ER 25; 14 St.) 3-4-5-6-7-8-9-10-11-12-13-14-15-16        | 644,00 |
| 470EH-S   | 470E (ER 32; 15 St.) 3-4-5-6-7-8-9-10-11-12-14-15-16-18-20     | 735,00 |
| 472EH-S   | 472E (ER 40; 16 St.) 4-5-6-7-8-9-10-11-12-14-16-18-20-22-24-26 | 928,00 |



Collets sealed for high pressure cooling 120 bar in wooden boxes with IC DIN 6499 B (ISO 15488 B) ER-system

$\nearrow \leq 0,015$

| Order no.   | Size   | GBP    |
|-------------|--|--------|
| 701.426EH.1 | 426E (ER 16; 8 St.) 3-4-5-6-7-8-9-10                           | 336,00 |
| 701.428EH.1 | 428E (ER 20; 11 St.) 3-4-5-6-7-8-9-10-11-12-13                 | 484,00 |
| 701.430EH.1 | 430E (ER 25; 14 St.) 3-4-5-6-7-8-9-10-11-12-13-14-15-16        | 644,00 |
| 701.470EH.1 | 470E (ER 32; 15 St.) 3-4-5-6-7-8-9-10-11-12-14-15-16-18-20     | 735,00 |
| 701.472EH.1 | 472E (ER 40; 16 St.) 4-5-6-7-8-9-10-11-12-14-16-18-20-22-24-26 | 928,00 |



Collets with cooling channels DIN 6499 A (ISO 15488 A) ER-system with square locking drive for tapping drills



Collets with cooling channels DIN 6499 A (ISO 15488 A) ER-system with square locking drive for tapping drills

| Order no.  | Size              | GBP   |
|------------|-------------------|-------|
| 426GC-3527 | ER 16 - 3,5 × 2,7 | 59,00 |
| 426GC-43   | ER 16 - 4 × 3     | 59,00 |
| 426GC-4534 | ER 16 - 4,5 × 3,4 | 59,00 |
| 426GC-649  | ER 16 - 6 × 4,9   | 59,00 |
| 426GC-755  | ER 16 - 7 × 5,5   | 59,00 |
| 426GC-862  | ER 16 - 8 × 6,2   | 59,00 |
|            |                   |       |
| 428GC-3527 | ER 20 - 3,5 × 2,7 | 59,00 |
| 428GC-43   | ER 20 - 4 × 3     | 59,00 |
| 428GC-4534 | ER 20 - 4,5 × 3,4 | 59,00 |
| 428GC-649  | ER 20 - 6 × 4,9   | 59,00 |
| 428GC-755  | ER 20 - 7 × 5,5   | 59,00 |
| 428GC-862  | ER 20 - 8 × 6,2   | 59,00 |
| 428GC-97   | ER 20 - 9 × 7     | 59,00 |
| 428GC-108  | ER 20 - 10 × 8    | 59,00 |
|            |                   |       |
| 430GC-3527 | ER 25 - 3,5 × 2,7 | 59,00 |
| 430GC-43   | ER 25 - 4 × 3     | 59,00 |
| 430GC-4534 | ER 25 - 4,5 × 3,4 | 59,00 |
| 430GC-649  | ER 25 - 6 × 4,9   | 59,00 |
| 430GC-755  | ER 25 - 7 × 5,5   | 59,00 |
| 430GC-862  | ER 25 - 8 × 6,2   | 59,00 |
| 430GC-97   | ER 25 - 9 × 7     | 59,00 |
| 430GC-108  | ER 25 - 10 × 8    | 59,00 |
| 430GC-119  | ER 25 - 11 × 9    | 59,00 |
| 430GC-129  | ER 25 - 12 × 9    | 59,00 |

| Order no.   | Size              | GBP   |
|-------------|-------------------|-------|
| 470GC-4534  | ER 32 - 4,5 × 3,4 | 59,00 |
| 470GC-649   | ER 32 - 6 × 4,9   | 59,00 |
| 470GC-755   | ER 32 - 7 × 5,5   | 59,00 |
| 470GC-862   | ER 32 - 8 × 6,2   | 59,00 |
| 470GC-97    | ER 32 - 9 × 7     | 59,00 |
| 470GC-108   | ER 32 - 10 × 8    | 59,00 |
| 470GC-119   | ER 32 - 11 × 9    | 59,00 |
| 470GC-129   | ER 32 - 12 × 9    | 59,00 |
| 470GC-1411  | ER 32 - 14 × 11   | 59,00 |
| 470GC-1612  | ER 32 - 16 × 12   | 59,00 |
|             |                   |       |
| 472GC-649   | ER 40 - 6 × 4,9   | 69,00 |
| 472GC-755   | ER 40 - 7 × 5,5   | 69,00 |
| 472GC-862   | ER 40 - 8 × 6,2   | 69,00 |
| 472GC-97    | ER 40 - 9 × 7     | 69,00 |
| 472GC-108   | ER 40 - 10 × 8    | 69,00 |
| 472GC-119   | ER 40 - 11 × 9    | 69,00 |
| 472GC-129   | ER 40 - 12 × 9    | 69,00 |
| 472GC-1411  | ER 40 - 14 × 11   | 69,00 |
| 472GC-1612  | ER 40 - 16 × 12   | 69,00 |
| 472GC-18145 | ER 40 - 18 × 14,5 | 69,00 |
| 472GC-2016  | ER 40 - 20 × 16   | 69,00 |



Collets set with cooling channels in wooden sockets DIN 6499 A (ISO 15488 A) ER-system with square locking drive for tapping drills

| Order no. | Size   | GBP    |
|-----------|--|--------|
| 426GC-S   | 426E (ER 16   6 St.) 3,5×2,7 - 4×3 - 4,5×3,4 - 6×4,9 - 7×5,5 - 8×6,2                                     | 354,00 |
| 428GC-S   | 428E (ER 20   8 St.) 3,5×2,7 - 4×3 - 4,5×3,4 - 6×4,9 - 7×5,5 - 8×6,2 - 9×7 - 10×8                        | 472,00 |
| 430GC-S   | 430E (ER 25   10 St.) 3,5×2,7 - 4×3 - 4,5×3,4 - 6×4,9 - 7×5,5 - 8×6,2 - 9×7 - 10×8 - 11×9 - 12×9         | 590,00 |
| 470GC-S   | 470E (ER 32   10 St.) 4,5×3,4 - 6×4,9 - 7×5,5 - 8×6,2 - 9×7 - 10×8 - 11×9 - 12×9 - 14×11 - 16×12         | 590,00 |
| 472GC-S   | 472E (ER 40   11 St.) 6×4,9 - 7×5,5 - 8×6,2 - 9×7 - 10×8 - 11×9 - 12×9 - 14×11 - 16×12 - 18×14,5 - 20×16 | 759,00 |



Precision collets KPS-system

| Order no.          | Size       | GBP   |
|--------------------|------------|-------|
| 490EK - Ø (KPS 10) | 1,0 – 5,5  | 42,00 |
|                    | 6,0 – 10,0 | 34,00 |
| 496EK - Ø (KPS 16) | 4,0        | 51,00 |
|                    | 4,5 – 16,0 | 42,00 |



Setting screw for KPS-system for internal cooling

| Order no. | Size   | GBP   |
|-----------|--------|-------|
| 490EK-184 | KPS 10 | 9,00  |
| 496EK-184 | KPS 16 | 12,00 |

$\nabla \leq 0,005$  0,5 mm steps



Collet extractor KPS-system

| Order no. | Size   | GBP   |
|-----------|--------|-------|
| 490EK-183 | KPS 10 | 15,00 |
| 496EK-183 | KPS 16 | 19,00 |



Roller Bearing Wrench for clamping nuts KPS-system

| Order no. | Size   | GBP   |
|-----------|--------|-------|
| 490EK-182 | KPS 10 | 83,00 |
| 496EK-182 | KPS 16 | 96,00 |



KPS collet sets in wooden sockets

$\nabla \leq 0,005$

| Order no.                    | Size  | GBP    |
|------------------------------|---|--------|
| <i>Order no. / Référence</i> | <i>Size / Dimension</i>                                   |        |
| 490EK-S                      | 490 EK (KPS 10   9 St.) 2-3-4-5-6-7-8-9-10                | 338,00 |
| 496EK-S                      | 496 EK (KPS 16   13 St.) 4-5-6-7-8-9-10-11-12-13-14-15-16 | 555,00 |

The high precision collet chuck (KPS) is the alternative to hydraulic expansion chucks and shrink chucks.

High flexibility due to interchangeable collets (precision collets System KPS available from Ø 0.5 up to 16 mm).

High clamping forces and concentricity lead to top surfaces and longer tool life.

Plain clamping nut without grooves for high speed machining.

Slim version

Tool shanks:

Cylindrical DIN 1835-1 form A/DIN 6535 form HA, tolerance hg.

Dedicated clamping size on the nominal diameter. Collets available in steps of 0.5 mm.

Run-out:

Maximum runout when measured at a gauge projection of 4×d in relation to the external taper is 5 µm.

Balancing:

Fine balancing is standard (G 2.5 30,000 min<sup>-1</sup>).

Note:

KPS-system chucks are delivered as standard without stop end screws. The use of stop end screws is not recommended at high spindle speeds, e.g. over 10,000 rpm.





Pull studs DIN 69872 A

| Order no.     | Size       | GBP  |
|---------------|------------|------|
| 402.20.16     | M16 Form A | 7,00 |
| 402.20.16.0 * | M16 Form A | 8,00 |

\* With drill through, incl. O-ring



Pull studs ISO 7388

| Order no. | Size | GBP  |
|-----------|------|------|
| 404.20.16 | M16  | 7,00 |

With drill through, without O-ring



Pull studs MAS 403 BT (JIS B 6339)

| Order no. | Size      | GBP  |
|-----------|-----------|------|
| 405.20.45 | M16 - 45° | 7,00 |
| 405.20.60 | M16 - 60° | 7,00 |
| 405.20.90 | M16 - 90° | 7,00 |

Sealed, without O-ring



Pull studs MAS 403 BT (JIS B 6339)

| Order no. | Size      | GBP  |
|-----------|-----------|------|
| 406.20.45 | M16 - 45° | 8,00 |
| 406.20.60 | M16 - 60° | 8,00 |
| 406.20.90 | M16 - 90° | 8,00 |

With drill through, incl. O-ring



Pull studs Haas

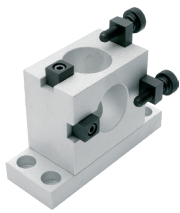
| Order no.    | Size      | GBP  |
|--------------|-----------|------|
| 405.20.45.21 | M16 - 45° | 9,00 |

With drill through, incl. O-ring



Adjusting Screws for collet chucks

| Order no. | Size /<br>Size /                        | GBP  |
|-----------|---|------|
| 101.02.05 | ER16<br>M10 x 1,5 - 20 mm               | 4,00 |
| 101.02.10 | ER20<br>M12 x 1,75 - 20 mm              | 5,00 |
| 101.02.15 | ER25 / ER32 / ER40<br>M16 x 2,0 - 20 mm | 6,00 |



Tightening fixtures made of aluminium

| Order no. | Size  | GBP    |
|-----------|-------|--------|
| 700.40    | SK 40 | 101,00 |



Universal assembly blocks made of steel, pivoted

| Order no. | Size  | GBP    |
|-----------|-------|--------|
| 705.40    | SK 40 | 167,00 |



Universal ball bearing tightening fixture

| Order no. | Size                             | GBP    |
|-----------|----------------------------------|--------|
| 706.63    | HSK63 - SK40 - BT40 - CAT40 - C6 | 230,00 |



Wrenches for clamping nuts ER-system

| Order no. | Size           | GBP   |
|-----------|----------------|-------|
| 02.10.1   | 1 - 10 (ER 16) | 14,00 |
| 02.13     | 2 - 13 (ER 20) | 17,00 |
| 02.16     | 2 - 16 (ER 25) | 17,00 |
| 02.20     | 2 - 20 (ER 32) | 18,00 |
| 02.26     | 2 - 26 (ER 40) | 26,00 |



Set of parallel supports

| Order no.   | Ausführung           | GBP    |
|-------------|----------------------|--------|
| 91.12.150.1 | 14 x 2 - 150x10x14   | 200,00 |
| 91.12.150.2 | 14 x 2 - 150 x 8 x14 | 200,00 |
| 91.12.200.3 | 14 x 2 - 200x10x14   | 263,00 |
| 91.13.100.1 | 9 x 2 - 100x4x10     | 168,00 |



Mini wrenches for clamping nuts ER-system

| Order no. | Size                | GBP   |
|-----------|---------------------|-------|
| 02.07.3   | 1 - 7 (ER 11) Mini  | 15,00 |
| 02.10.3   | 1 - 10 (ER 16) Mini | 16,00 |

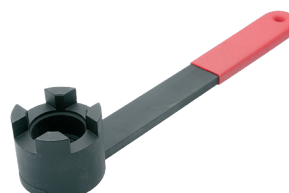


Coolant tubes

ISO 12164-1  
(DIN 69893-1)

HSK - A

| Order no. | Size   | GBP   |
|-----------|--------|-------|
| A63.700   | HSK 63 | 11,00 |



Wrenches DIN 6368 for shell arbors

| Order no. | Size     | GBP   |
|-----------|----------|-------|
| 10.16     | 16 / M8  | 13,00 |
| 10.22     | 22 / M10 | 16,00 |
| 10.27     | 27 / M12 | 19,00 |
| 10.32     | 32 / M16 | 24,00 |
| 10.40     | 40 / M20 | 33,00 |



Key for coolant tubes

| Order no. | Size   | GBP   |
|-----------|--------|-------|
| A63.701   | HSK 63 | 21,00 |

# K Quick change adaptors for tapping chucks



Adaptors with clutch

| Order no.     | Size                   | GBP   |
|---------------|------------------------|-------|
| 16.11.228     | Gr. 1 M2 - 2,8 × 2,1   | 35,00 |
| 16.11.2528    | Gr. 1 M2,5 - 2,8 × 2,1 | 35,00 |
| 16.11.335     | Gr. 1 M3 - 3,5 × 2,7   | 35,00 |
| 16.11.354     | Gr. 1 M3,5 - 4 × 3     | 35,00 |
| 16.11.445     | Gr. 1 M4 - 4,5 × 3,4   | 35,00 |
| 16.11.5649    | Gr. 1 M5 - 6 × 4,9     | 35,00 |
| 16.11.6649    | Gr. 1 M6 - 6 × 4,9     | 35,00 |
| 16.11.88      | Gr. 1 M8 - 8 × 6,2     | 35,00 |
| 16.11.107     | Gr. 1 M10 - 7 × 5,5    | 35,00 |
| 16.11.1010    | Gr. 1 M10 - 10 × 8     | 35,00 |
| 16.11.129     | Gr. 1 M12 - 9 × 7      | 35,00 |
| 16.11.14119   | Gr. 1 M14 - 11 × 9     | 35,00 |
| 16.12.5649    | Gr. 2 M5 - 6 × 4,9     | 50,00 |
| 16.12.6649    | Gr. 2 M6 - 6 × 4,9     | 50,00 |
| 16.12.88      | Gr. 2 M8 - 8 × 6,2     | 50,00 |
| 16.12.107     | Gr. 2 M10 - 7 × 5,5    | 50,00 |
| 16.12.1010    | Gr. 2 M10 - 10 × 8     | 50,00 |
| 16.12.129     | Gr. 2 M12 - 9 × 7      | 50,00 |
| 16.12.1411    | Gr. 2 M14 - 11 × 9     | 50,00 |
| 16.12.1612    | Gr. 2 M16 - 12 × 9     | 50,00 |
| 16.12.181411  | Gr. 2 M18 - 14 × 11    | 50,00 |
| 16.12.2016    | Gr. 2 M20 - 16 × 12    | 50,00 |
| 16.12.2218145 | Gr. 2 M22 - 18 × 14,5  | 50,00 |



Adaptors without clutch

| Order no.   | Size            | GBP   |
|-------------|-----------------|-------|
| 16.01.2821  | Gr. 1 2,8 × 2,1 | 16,00 |
| 16.01.3527  | Gr. 1 3,5 × 2,7 | 16,00 |
| 16.01.43    | Gr. 1 4 × 3     | 16,00 |
| 16.01.4534  | Gr. 1 4,5 × 3,4 | 16,00 |
| 16.01.649   | Gr. 1 6 × 4,9   | 16,00 |
| 16.01.755   | Gr. 1 7 × 5,5   | 16,00 |
| 16.01.862   | Gr. 1 8 × 6,2   | 16,00 |
| 16.01.97    | Gr. 1 9 × 7     | 16,00 |
| 16.01.108   | Gr. 1 10 × 8    | 16,00 |
| 16.01.119   | Gr. 1 11 × 9    | 16,00 |
| 16.02.649   | Gr. 2 6 × 4,9   | 24,00 |
| 16.02.755   | Gr. 2 7 × 5,5   | 24,00 |
| 16.02.862   | Gr. 2 8 × 6,2   | 24,00 |
| 16.02.97    | Gr. 2 9 × 7     | 24,00 |
| 16.02.108   | Gr. 2 10 × 8    | 24,00 |
| 16.02.119   | Gr. 2 11 × 9    | 24,00 |
| 16.02.129   | Gr. 2 12 × 9    | 24,00 |
| 16.02.1411  | Gr. 2 14 × 11   | 24,00 |
| 16.02.1612  | Gr. 2 16 × 12   | 24,00 |
| 16.02.18145 | Gr. 2 18 × 14,5 | 24,00 |



Quick-change tapping chucks with length compensation on compression and expansion for tool shanks DIN 1835 B+E

| Order no.   | Size                | GBP    |
|-------------|---------------------|--------|
| 120.16.2012 | 20 - M3 / M14 Gr. 1 | 142,00 |
| 120.16.2020 | 20 - M5 / M22 Gr. 2 | 188,00 |
| 120.16.2512 | 25 - M3 / M14 Gr. 1 | 221,00 |
| 120.16.2520 | 25 - M5 / M22 Gr. 2 | 231,00 |
| 120.16.3220 | 32 - M5 / M22 Gr. 2 | 242,00 |



Tapping chucks for synchronisation with tool shanks DIN 1835 B+E for collets ER-system

| Order no.     | Size                | GBP    |
|---------------|---------------------|--------|
| 120.16.2016 * | 20 - M3 / M10 ER 16 | 219,00 |
| 120.16.2025   | 20 - M3 / M20 ER 25 | 227,00 |
| 120.16.2516 * | 25 - M3 / M10 ER 16 | 236,00 |
| 120.16.2525   | 25 - M3 / M20 ER 25 | 236,00 |
| 120.16.2532   | 25 - M4 / M27 ER 32 | 244,00 |
| 120.16.2540   | 25 - M4 / M33 ER 40 | 282,00 |
| 120.16.3232   | 32 - M4 / M27 ER 32 | 282,00 |
| 120.16.3240   | 32 - M4 / M33 ER 40 | 282,00 |

\* with Mini nut





Z-Axis Zero-setters without magnet

| Order no. | Size | GBP |
|-----------|------|-----|
|-----------|------|-----|

|            |              |        |
|------------|--------------|--------|
| 702.5.48.1 | 65 - 50 - 48 | 147,00 |
|------------|--------------|--------|

Height 50 mm



Edge finders mechanical

| Order no. | Size | GBP |
|-----------|------|-----|
|-----------|------|-----|

|        |             |       |
|--------|-------------|-------|
| 702.10 | 10 - 84 -10 | 17,00 |
|--------|-------------|-------|

|          |               |       |
|----------|---------------|-------|
| 702.10.4 | 10 - 94 -10/4 | 17,00 |
|----------|---------------|-------|



Z-Axis Zero-setters with magnet

| Order no. | Size | GBP |
|-----------|------|-----|
|-----------|------|-----|

|            |              |        |
|------------|--------------|--------|
| 702.5.48.2 | 61 - 54 - 52 | 179,00 |
|------------|--------------|--------|

Height 50 mm



Edge finders electronic 2D

| Order no. | Size | GBP |
|-----------|------|-----|
|-----------|------|-----|

|        |              |       |
|--------|--------------|-------|
| 702.16 | 16 - 100 -10 | 79,00 |
|--------|--------------|-------|

|        |              |       |
|--------|--------------|-------|
| 702.20 | 20 - 160 -10 | 84,00 |
|--------|--------------|-------|



Electronic Z-Axis Zero-setters with magnet

| Order no. | Size | GBP |
|-----------|------|-----|
|-----------|------|-----|

|          |              |        |
|----------|--------------|--------|
| 702.4.19 | 56 - 50 - 14 | 118,00 |
|----------|--------------|--------|

Height 50 mm



Edge finders electronic 3D

| Order no. | Size | GBP |
|-----------|------|-----|
|-----------|------|-----|

|          |              |        |
|----------|--------------|--------|
| 702.3.16 | 16 - 111 -10 | 120,00 |
|----------|--------------|--------|

|          |              |        |
|----------|--------------|--------|
| 702.3.20 | 20 - 106 -10 | 130,00 |
|----------|--------------|--------|



Please check our main catalogue for more products and detailed information.

### Construction:

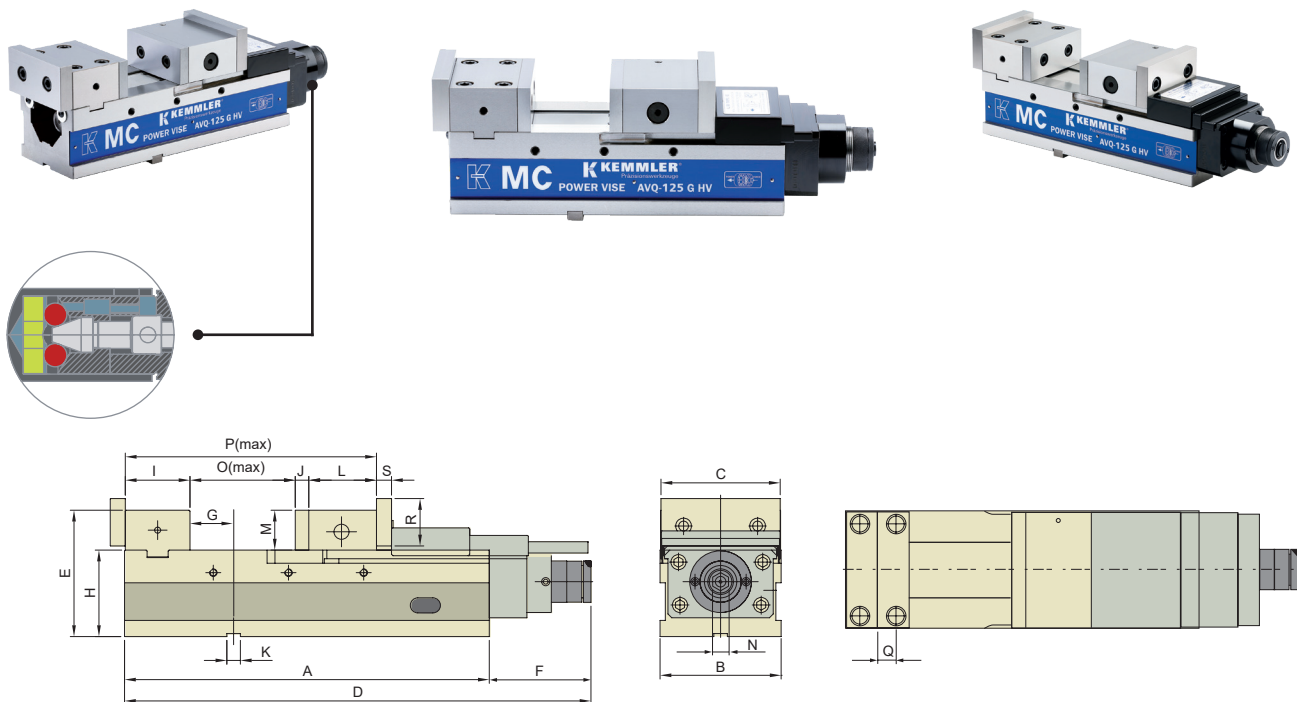
- With mechanical booster
- Clamping force preadjustable by graduation lines
- Clamping positions: horizontal, vertical and lateral
- The steel body is hardened and grinded all-round
- Integrated pull-down mechanism
- Bed height H:  $\leq 0,01$  mm

### Delivery:

- Manual
- Wrench
- 4 pcs. vice clamps
- 4 pcs. T-nuts 18mm
- Test certificate

### Clamping force:

- KS02010 = 25 kN
- KS02020 = 35 kN
- KS02030 = 45 kN
- KS02040 = 50 kN



### With patented mechanical booster:

- 1 no loss of oil
- 2 exact repeatability of the clamping force
- 3 constant clamping force
- 4 no vibrations during the operation
- 5 long life

| Order no. | Type    | A   | B   | C     | D   | E   | F   | G  | H   | I   | J  | K  | L    | M  | N  | O   | P     | Q    | R  | S  | kN | kg  | GBP     |
|-----------|---------|-----|-----|-------|-----|-----|-----|----|-----|-----|----|----|------|----|----|-----|-------|------|----|----|----|-----|---------|
| KS02010   | AVQ-100 | 324 | 104 | 102   | 428 | 130 | 104 | 41 | 85  | 73  | 15 | 18 | 86,5 | 45 | 14 | 140 | 314,5 | 20   | 55 | 17 | 25 | 30  | 1486,00 |
| KS02020*  | AVQ-125 | 390 | 127 | 125   | 495 | 153 | 105 | 66 | 100 | 78  | 15 | 18 | 87,5 | 53 | 14 | 201 | 381,5 | 22,5 | 63 | 20 | 35 | 46  | 1637,00 |
| KS02030*  | AVQ-160 | 485 | 161 | 159,5 | 605 | 168 | 120 | 58 | 115 | 86  | 18 | 18 | 80   | 53 | 14 | 295 | 479   | 25   | 63 | 20 | 45 | 71  | 2070,00 |
| KS02040*  | AVQ-200 | 535 | 202 | 200   | 655 | 178 | 128 | 75 | 120 | 101 | 18 | 18 | 95   | 58 | 14 | 320 | 534   | 31   | 73 | 20 | 50 | 100 | 2398,00 |

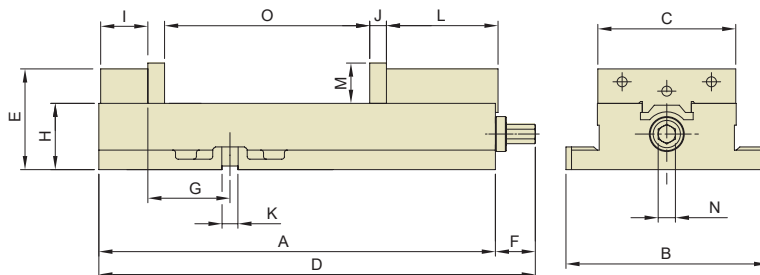
\* extra shipping costs

**Construction:**

- Clamping positions: horizontal and vertical
- The steel body is hardened and grinded
- Integrated pull-down mechanism
- Bed height H: ≤ 0,01 mm

**Delivery:**

- Instructions for use
- Wrench
- Test certificate



| Order no. | Type    | A     | B   | C     | D     | E       | F  | G     | H      | I    | J    | K  | L   | M    | N  | O     | kg | GBP     |
|-----------|---------|-------|-----|-------|-------|---------|----|-------|--------|------|------|----|-----|------|----|-------|----|---------|
| KS11010   | ATD-460 | 312,5 | 166 | 103,5 | 352,5 | 85,65   | 40 | 71    | 57,15  | 35,1 | 15   | 12 | 102 | 35,0 | 14 | 103,9 | 18 | 457,00  |
| KS11020   | ATD-570 | 368,0 | 194 | 127,0 | 404,0 | 97,00   | 36 | 85    | 63,5   | 40,5 | 17   | 16 | 120 | 38,1 | 16 | 127,0 | 25 | 515,00  |
| KS11030*  | ATW-675 | 432,0 | 235 | 152,0 | 476,0 | 111,02  | 44 | 108   | 73,02  | 52,0 | 18   | 20 | 123 | 44,5 | 19 | 192,0 | 36 | 574,00  |
| KS11040*  | ATW-689 | 437   | 222 | 152   | 481,0 | 111,025 | 44 | 90,5  | 73,025 | 52   | 18   | 20 | 123 | 44,5 | 19 | 226,0 | 36 | 656,00  |
| KS11050*  | ATW-810 | 555   | 295 | 203   | 585,0 | 134,074 | 30 | 125,7 | 84,074 | 58   | 24,2 | 20 | 157 | 56,0 | 19 | 265,0 | 68 | 1275,00 |

\* extra shipping costs



**Industrial Tooling Corporation Ltd  
Cyber House / 1 Kepler  
Lichfield Road Industrial Estate  
Tamworth / Staffordshire  
B79 7XE / United Kingdom**

**Contact:  
01827 304500  
sales@itc-ltd.co.uk  
www.itc-ltd.co.uk**

---